



TARRAWONGA COAL MINE – MONTHLY MONITORING SUMMARY

Site Information

EPL No: 12365

EPA Website Link: <http://www.epa.nsw.gov.au/prpoeoapp/ViewPOEOLicence.aspx?DOCID=55113&SYSUID=1&LICID=12365>

Licensee: Tarrawonga Coal Pty Ltd

Licensee Address: Tarrawonga Coal Mine, 469 Goonbri Road, BOGGABRI NSW 2382

EPL Monitoring Points: See Figure 1 and 2 below

Sampling Period: January 2017

Obtained Date: 21 March 2017

Publication Date: 6 February 2017

Table 1 - No Pollutant Limits Apply

EPL ID	Pollutant	Units of Measure	Monitoring Frequency	No. of Samples for the Month	Date Sampled	Date Obtained	Min Value	Mean Value	Median Value	Max or Only Value
5	TSS	mg/L	Upon discharge	0	-	-	-	-	-	-
	Conductivity	ms/cm		0	-	-	-	-	-	-
	Oil & Grease	mg/L		0	-	-	-	-	-	-
	pH	pH		0	-	-	-	-	-	-
6	TSS	mg/L	Upon discharge	0	-	-	-	-	-	-
	Conductivity	ms/cm		0	-	-	-	-	-	-
	Oil & Grease	mg/L		0	-	-	-	-	-	-
	pH	pH		0	-	-	-	-	-	-
7	TSS	mg/L	Upon discharge	0	-	-	-	-	-	-
	Conductivity	ms/cm		0	-	-	-	-	-	-
	Oil & Grease	mg/L		0	-	-	-	-	-	-
	pH	pH		0	-	-	-	-	-	-
8	TSS	mg/L	Upon discharge	0	-	-	-	-	-	-
	Conductivity	ms/cm		0	-	-	-	-	-	-
	Oil & Grease	mg/L		0	-	-	-	-	-	-



EPL ID	Pollutant	Units of Measure	Monitoring Frequency	No. of Samples for the Month	Date Sampled	Date Obtained	Min Value	Mean Value	Median Value	Max or Only Value
	pH	pH		0	-	-	-	-	-	-

Table 2 - Pollutant Limits Apply

EPL ID	Pollutant	Units of Measure	Monitoring Frequency	No. of Samples for the Month	Date Sampled	Date Obtained	Min Value	Max or Only Value	100%ile Limit	Exceedance (Yes/No)	Comments
1	TSS	mg/L	Upon discharge	0	-	-	-	-		-	-
	Oil & Grease	mg/L		0	-	-	-	-		-	-
	pH	pH		0	-	-	-	-		-	-
2	TSS	mg/L	Upon discharge	0	-	-	-	-		-	-
	Oil & Grease	mg/L		0	-	-	-	-		-	-
	pH	pH		0	-	-	-	-		-	-
3	TSS	mg/L	Upon discharge	0	-	-	-	-		-	-
	Oil & Grease	mg/L		0	-	-	-	-		-	-
	pH	pH		0	-	-	-	-		-	-
24	TSS	mg/L	Upon discharge	0	-	-	-	-		-	-
	Oil & Grease	mg/L		0	-	-	-	-		-	-
	pH	pH		0	-	-	-	-		-	-
25	TSS	mg/L	Upon discharge	0	-	-	-	-		-	-
	Oil & Grease	mg/L		0	-	-	-	-		-	-
	pH	pH		0	-	-	-	-		-	-
26	TSS	mg/L	Upon discharge	0	-	-	-	-		-	-
	Oil & Grease	mg/L		0	-	-	-	-		-	-
	pH	pH		0	-	-	-	-		-	-
27	TSS	mg/L	Upon discharge	0	-	-	-	-		-	-
	Oil & Grease	mg/L		0	-	-	-	-		-	-
	pH	pH		0	-	-	-	-		-	-



Table 3 – Monitoring (Quarterly & 6 Monthly – No Limits apply)

EPL ID	Pollutant	Units of Measure	Monitoring Frequency	No. of Samples for the Period	Date Sampled	Date Obtained	Min Value	Mean Value	Median Value	Max or Only Value
9	Conductivity	ms/cm	6 monthly	0	-	-	-	-		
	Lead	mg/L		0	-	-	-	-		
	pH	pH		0	-	-	-	-		
	Standing Water Level	metres		0	-	-	-	-		
10	Conductivity	ms/cm	6 monthly	0	-	-	-	-		
	Lead	mg/L		0	-	-	-	-		
	pH	pH		0	-	-	-	-		
	Standing Water Level	metres		0	-	-	-	-		
11	Conductivity	ms/cm	6 monthly	1	9/1/2017	21/3/2017	-	-		2070
	Lead	mg/L		1	9/1/2017	21/3/2017	-	-		<0.001
	pH	pH		1	9/1/2017	21/3/2017	-	-		7.9
	Standing Water Level	metres		1	9/1/2017	21/3/2017	-	-		8.35
12	Conductivity	ms/cm	6 monthly	0	-	-	-	-		
	Lead	mg/L		0	-	-	-	-		
	pH	pH		0	-	-	-	-		
	Standing Water Level	metres		0	-	-	-	-		
13	Conductivity	ms/cm	Quarterly	0	-	-	-	-		
	Oil & Grease	mg/L		0	-	-	-	-		
	pH	pH		0	-	-	-	-		
	TSS	mg/L		0	-	-	-	-		



Table 4 – Monitoring (Noise – Limits Apply)

EPL ID	Date	Start Time	Measurement period	Measured Levels – dB(A) Leq 15min Day	Measured Levels – dB(A) Leq 15min Evening	Measured Levels – dB(A) Leq 15min Night	Measured Levels – dB(A) LA1 (1 min) Night	Limit	Wind Speed (m/s)	Stability Category	Compliant (Yes/No)	Date Obtained
TN2, TN3, TN4												No Monitoring



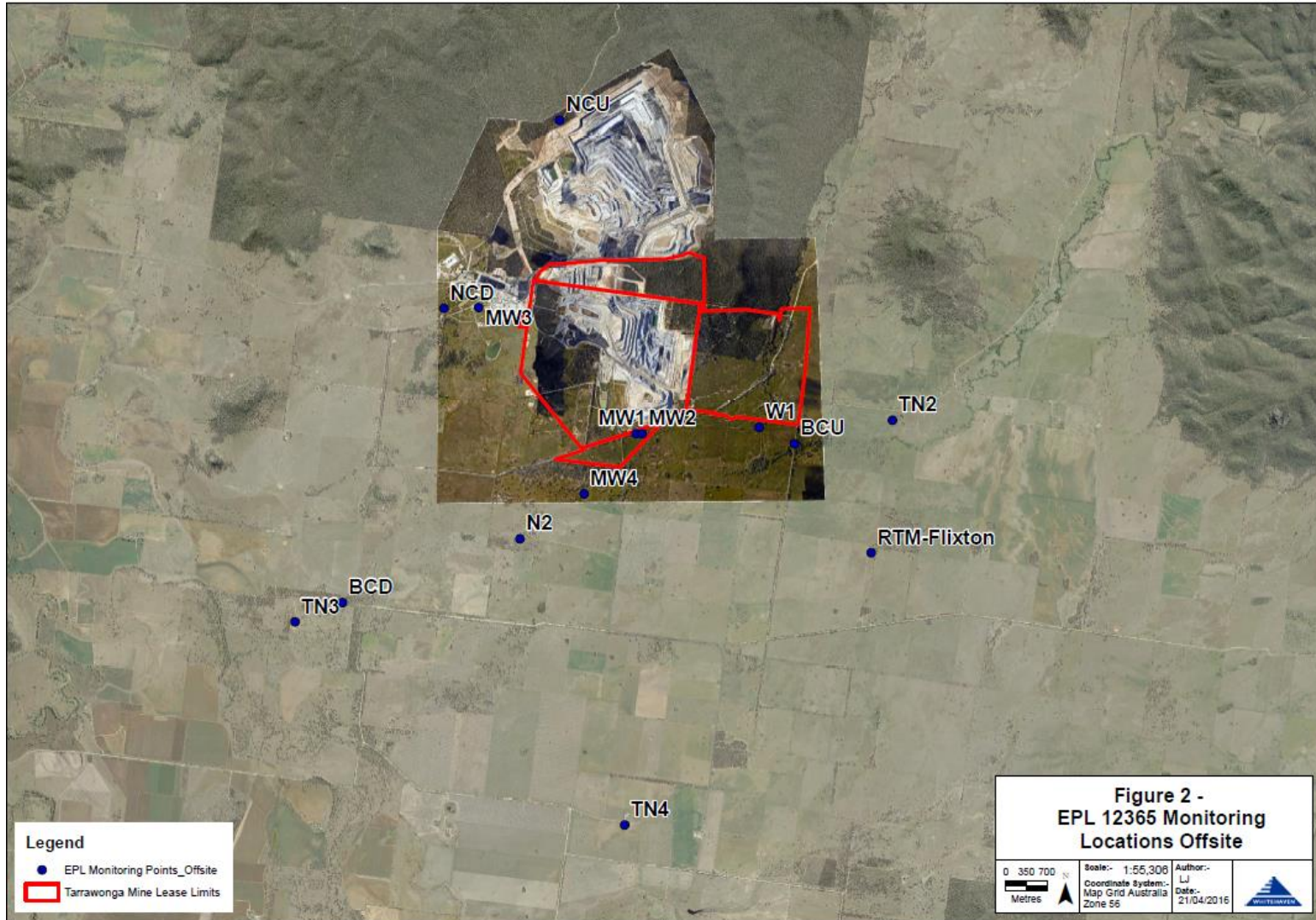
Table 5 – Monitoring (Blasts – Limits Apply)

Location	Parameter	Units of Measure	Frequency	No. of Blasts for the Month	Average Value	Max Value	100%ile Limit	(Potential) Non-compliance /breach	Date Obtained
Tarrowonga	Blast Noise	dB (Lin Peak)	Every Blast	4	99.5	107.5	120	Nil	24/1/2017
	Blast Vibration	mm/s	Every Blast	4	0.26	0.39	10	Nil	24/1/2017

Figure 1 – EPL 12365 Onsite Monitoring Locations



Figure 2 – EPL 12365 Offsite Monitoring Locations





TARRAWONGA COAL MINE – MONTHLY MONITORING SUMMARY

Site Information

EPL No: 12365

EPA Website Link: <http://www.epa.nsw.gov.au/prpoeoapp/ViewPOEOLicence.aspx?DOCID=55113&SYSUID=1&LICID=12365>

Licensee: Tarrawonga Coal Pty Ltd

Licensee Address: Tarrawonga Coal Mine, 469 Goonbri Road, BOGGABRI NSW 2382

EPL Monitoring Points: See Figure 1 and 2 below

Sampling Period: February 2017

Obtained Date: 31 March 2017

Publication Date: 5 April 2017

Table 1 - No Pollutant Limits Apply

EPL ID	Pollutant	Units of Measure	Monitoring Frequency	No. of Samples for the Month	Date Sampled	Date Obtained	Min Value	Mean Value	Median Value	Max or Only Value
5	TSS	mg/L	Upon discharge	0	-	-	-	-	-	-
	Conductivity	ms/cm		0	-	-	-	-	-	-
	Oil & Grease	mg/L		0	-	-	-	-	-	-
	pH	pH		0	-	-	-	-	-	-
6	TSS	mg/L	Upon discharge	0	-	-	-	-	-	-
	Conductivity	ms/cm		0	-	-	-	-	-	-
	Oil & Grease	mg/L		0	-	-	-	-	-	-
	pH	pH		0	-	-	-	-	-	-
7	TSS	mg/L	Upon discharge	0	-	-	-	-	-	-
	Conductivity	ms/cm		0	-	-	-	-	-	-
	Oil & Grease	mg/L		0	-	-	-	-	-	-
	pH	pH		0	-	-	-	-	-	-
8	TSS	mg/L	Upon discharge	0	-	-	-	-	-	-
	Conductivity	ms/cm		0	-	-	-	-	-	-
	Oil & Grease	mg/L		0	-	-	-	-	-	-



EPL ID	Pollutant	Units of Measure	Monitoring Frequency	No. of Samples for the Month	Date Sampled	Date Obtained	Min Value	Mean Value	Median Value	Max or Only Value
	pH	pH		0	-	-	-	-	-	-

Table 2 - Pollutant Limits Apply

EPL ID	Pollutant	Units of Measure	Monitoring Frequency	No. of Samples for the Month	Date Sampled	Date Obtained	Min Value	Max or Only Value	100%ile Limit	Exceedance (Yes/No)	Comments
1	TSS	mg/L	Upon discharge	0	-	-	-	-		-	-
	Oil & Grease	mg/L		0	-	-	-	-		-	-
	pH	pH		0	-	-	-	-		-	-
2	TSS	mg/L	Upon discharge	0	-	-	-	-		-	-
	Oil & Grease	mg/L		0	-	-	-	-		-	-
	pH	pH		0	-	-	-	-		-	-
3	TSS	mg/L	Upon discharge	0	-	-	-	-		-	-
	Oil & Grease	mg/L		0	-	-	-	-		-	-
	pH	pH		0	-	-	-	-		-	-
24	TSS	mg/L	Upon discharge	0	-	-	-	-		-	-
	Oil & Grease	mg/L		0	-	-	-	-		-	-
	pH	pH		0	-	-	-	-		-	-
25	TSS	mg/L	Upon discharge	0	-	-	-	-		-	-
	Oil & Grease	mg/L		0	-	-	-	-		-	-
	pH	pH		0	-	-	-	-		-	-
26	TSS	mg/L	Upon discharge	0	-	-	-	-		-	-
	Oil & Grease	mg/L		0	-	-	-	-		-	-
	pH	pH		0	-	-	-	-		-	-
27	TSS	mg/L	Upon discharge	0	-	-	-	-		-	-
	Oil & Grease	mg/L		0	-	-	-	-		-	-
	pH	pH		0	-	-	-	-		-	-



Table 3 – Monitoring (Quarterly & 6 Monthly – No Limits apply)

EPL ID	Pollutant	Units of Measure	Monitoring Frequency	No. of Samples for the Period	Date Sampled	Date Obtained	Min Value	Mean Value	Median Value	Max or Only Value
9	Conductivity	ms/cm	6 monthly	0	-	-	-	-		
	Lead	mg/L		0	-	-	-	-		
	pH	pH		0	-	-	-	-		
	Standing Water Level	metres		0	-	-	-	-		
10	Conductivity	ms/cm	6 monthly	0	-	-	-	-		
	Lead	mg/L		0	-	-	-	-		
	pH	pH		0	-	-	-	-		
	Standing Water Level	metres		0	-	-	-	-		
11	Conductivity	ms/cm	6 monthly	0	-	-	-	-		
	Lead	mg/L		0	-	-	-	-		
	pH	pH		0	-	-	-	-		
	Standing Water Level	metres		0	-	-	-	-		
12	Conductivity	ms/cm	6 monthly	0	-	-	-	-		
	Lead	mg/L		0	-	-	-	-		
	pH	pH		0	-	-	-	-		
	Standing Water Level	metres		0	-	-	-	-		
13	Conductivity	ms/cm	Quarterly	1	8/2/17	16/2/17	-	-		3360
	Oil & Grease	mg/L		1	8/2/17	16/2/17	-	-		<5
	pH	pH		1	8/2/17	16/2/17	-	-		8.32
	TSS	mg/L		1	8/2/17	16/2/17	-	-		8



Table 4 – Monitoring (Noise – Limits Apply)

EPL ID	Date	Start Time	Measurement period	Measured Levels – dB(A) Leq 15min Day	Measured Levels – dB(A) Leq 15min Evening	Measured Levels – dB(A) Leq 15min Night	Measured Levels – dB(A) LA1 (1 min) Night	Limit	Wind Speed (m/s)	Stability Category	Compliant (Yes/No)	Date Obtained
TN2	27/2/17	16:15	90	IA				35	3.3	C	Yes	31/3/2017
	27/2/17	21:15	30		IA			35	1.4	E	Yes	
	27/2/17	22:30	60			IA		35	2	D	Yes	
	27/2/17	22:30	60				IA	45	2	D	Yes	
	28/2/17	11:15	90	IA				35	1.4	A	Yes	
	28/2/17	21:11	30		IA			35	0.3	F	Yes	
	28/2/17	22:30	60			<20		35	0.5	D	Yes	
	28/2/17	22:30	60				IA	45	0.5	D	Yes	



Table 5 – Monitoring (Noise – Limits Apply)

EPL ID	Date	Start Time	Measurement period	Measured Levels – dB(A) Leq 15min Day	Measured Levels – dB(A) Leq 15min Evening	Measured Levels – dB(A) Leq 15min Night	Measured Levels – dB(A) LA1 (1 min) Night	Limit	Wind Speed (m/s)	Stability Category	Compliant (Yes/No)	Date Obtained
TN3	27/2/17	15:31	90	<20				35	0	C	Yes	31/3/17
	27/2/17	20:35	30		<30			35	0.2	E	Yes	
	27/2/17	23:40	60			<25		35	0.9	D	Yes	
	27/2/17	23:40	60				26	45	0.9	d	Yes	
	28/2/17	13:30	90	IA				35	0.4	A	Yes	
	28/2/17	21:30	30		IA			35	0	E	Yes	
	28/2/17	22:37	60			IA		35	1.5	D	Yes	
	28/2/17	22:37	60				IA	45	1.5	D	Yes	



Table 6 – Monitoring (Noise – Limits Apply)

EPL ID	Date	Start Time	Measurement period	Measured Levels – dB(A) L _{eq} 15min Day	Measured Levels – dB(A) L _{eq} 15min Evening	Measured Levels – dB(A) L _{eq} 15min Night	Measured Levels – dB(A) L _{A1} (1 min) Night	Limit	Wind Speed (m/s)	Stability Category	Compliant (Yes/No)	Date Obtained
TN4	27/2/17	16:38	90	IA				35	4.6	D	Yes	31/3/2017
	27/2/17	21:26	30		IA			35	0.3	D	Yes	
	27/2/17	22:15	60			IA		35	2	D	Yes	
	27/2/17	22:30	60				IA	45	3.5	D	Yes	
	28/2/17	11:46	90	IA				35	2.2	A	Yes	
	28/2/17	20:58	30		IA			35	0	D	Yes	
	28/2/17	23:38	60			<20		35	NR	E	Yes	
28/2/17	23:53	60				IA	45	0.9	E	Yes		

NR – Not recorded



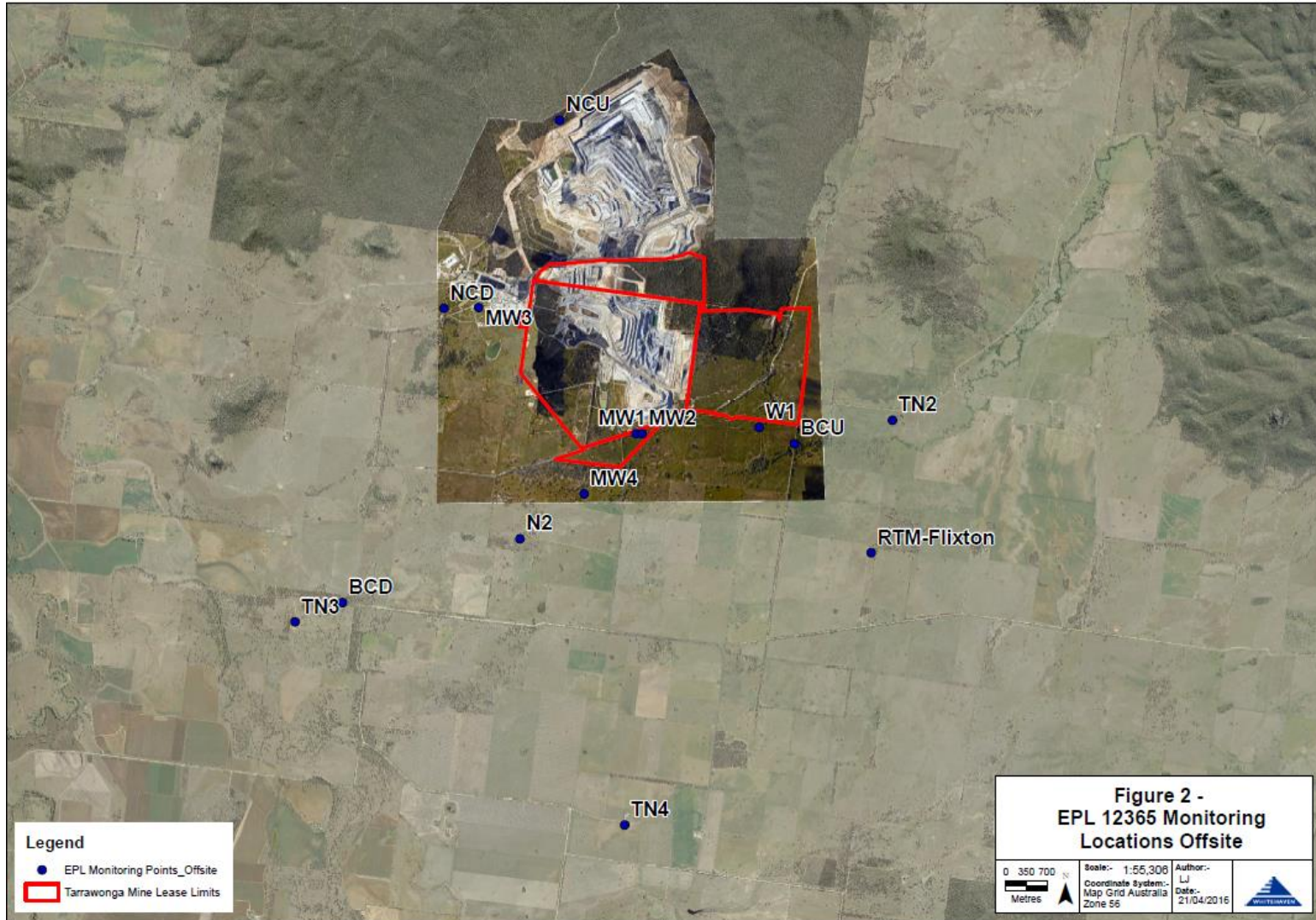
Table 7 – Monitoring (Blasts – Limits Apply)

Location	Parameter	Units of Measure	Frequency	No. of Blasts for the Month	Average Value	Max Value	100%ile Limit	(Potential) Non-compliance /breach	Date Obtained
Tarrawonga	Blast Noise	dB (Lin Peak)	Every Blast	7	99.7	108.4	120	Nil	28/2/2017
	Blast Vibration	mm/s	Every Blast	7	0.20	0.39	10	Nil	28/2/2017

Figure 1 – EPL 12365 Onsite Monitoring Locations



Figure 2 – EPL 12365 Offsite Monitoring Locations





TARRAWONGA COAL MINE – MONTHLY MONITORING SUMMARY

Site Information

EPL No: 12365

EPA Website Link: <http://www.epa.nsw.gov.au/prpoeoapp/ViewPOEOLicence.aspx?DOCID=55113&SYSUID=1&LICID=12365>

Licensee: Tarrawonga Coal Pty Ltd

Licensee Address: Tarrawonga Coal Mine, 469 Goonbri Road, BOGGABRI NSW 2382

EPL Monitoring Points: See Figure 1 and 2 below

Sampling Period: March 2017

Obtained Date: 31 March 2017

Publication Date: 5 April 2017

Table 1 - No Pollutant Limits Apply

EPL ID	Pollutant	Units of Measure	Monitoring Frequency	No. of Samples for the Month	Date Sampled	Date Obtained	Min Value	Mean Value	Median Value	Max or Only Value
5	TSS	mg/L	Upon discharge	0	-	-	-	-	-	-
	Conductivity	ms/cm		0	-	-	-	-	-	-
	Oil & Grease	mg/L		0	-	-	-	-	-	-
	pH	pH		0	-	-	-	-	-	-
6	TSS	mg/L	Upon discharge	0	-	-	-	-	-	-
	Conductivity	ms/cm		0	-	-	-	-	-	-
	Oil & Grease	mg/L		0	-	-	-	-	-	-
	pH	pH		0	-	-	-	-	-	-
7	TSS	mg/L	Upon discharge	0	-	-	-	-	-	-
	Conductivity	ms/cm		0	-	-	-	-	-	-
	Oil & Grease	mg/L		0	-	-	-	-	-	-
	pH	pH		0	-	-	-	-	-	-
8	TSS	mg/L	Upon discharge	0	-	-	-	-	-	-
	Conductivity	ms/cm		0	-	-	-	-	-	-
	Oil & Grease	mg/L		0	-	-	-	-	-	-



EPL ID	Pollutant	Units of Measure	Monitoring Frequency	No. of Samples for the Month	Date Sampled	Date Obtained	Min Value	Mean Value	Median Value	Max or Only Value
	pH	pH		0	-	-	-	-	-	-

Table 2 - Pollutant Limits Apply

EPL ID	Pollutant	Units of Measure	Monitoring Frequency	No. of Samples for the Month	Date Sampled	Date Obtained	Min Value	Max or Only Value	100%ile Limit	Exceedance (Yes/No)	Comments
1	TSS	mg/L	Upon discharge	0	-	-	-	-		-	-
	Oil & Grease	mg/L		0	-	-	-	-		-	-
	pH	pH		0	-	-	-	-		-	-
2	TSS	mg/L	Upon discharge	0	-	-	-	-		-	-
	Oil & Grease	mg/L		0	-	-	-	-		-	-
	pH	pH		0	-	-	-	-		-	-
3	TSS	mg/L	Upon discharge	0	-	-	-	-		-	-
	Oil & Grease	mg/L		0	-	-	-	-		-	-
	pH	pH		0	-	-	-	-		-	-
24	TSS	mg/L	Upon discharge	0	-	-	-	-		-	-
	Oil & Grease	mg/L		0	-	-	-	-		-	-
	pH	pH		0	-	-	-	-		-	-
25	TSS	mg/L	Upon discharge	0	-	-	-	-		-	-
	Oil & Grease	mg/L		0	-	-	-	-		-	-
	pH	pH		0	-	-	-	-		-	-
26	TSS	mg/L	Upon discharge	0	-	-	-	-		-	-
	Oil & Grease	mg/L		0	-	-	-	-		-	-
	pH	pH		0	-	-	-	-		-	-
27	TSS	mg/L	Upon discharge	0	-	-	-	-		-	-
	Oil & Grease	mg/L		0	-	-	-	-		-	-
	pH	pH		0	-	-	-	-		-	-



Table 3 – Monitoring (Quarterly & 6 Monthly – No Limits apply)

EPL ID	Pollutant	Units of Measure	Monitoring Frequency	No. of Samples for the Period	Date Sampled	Date Obtained	Min Value	Mean Value	Median Value	Max or Only Value
9	Conductivity	ms/cm	6 monthly	1	23/3/2017	30/3/2017	-	-		3380
	Lead	mg/L		1	23/3/2017	30/3/2017	-	-		0.011
	pH	pH		1	23/3/2017	30/3/2017	-	-		8.36
	Standing Water Level	metres		1	23/3/2017	30/3/2017	-	-		6.66
10	Conductivity	ms/cm	6 monthly	1	23/3/2017	30/3/2017	-	-		650
	Lead	mg/L		1	23/3/2017	30/3/2017	-	-		0.004
	pH	pH		1	23/3/2017	30/3/2017	-	-		7.70
	Standing Water Level	metres		1	23/3/2017	30/3/2017	-	-		3.85
11	Conductivity	ms/cm	6 monthly	0	-	-	-	-		
	Lead	mg/L		0	-	-	-	-		
	pH	pH		0	-	-	-	-		
	Standing Water Level	metres		0	-	-	-	-		
12	Conductivity	ms/cm	6 monthly	1	23/3/2017	30/3/2017	-	-		4610
	Lead	mg/L		1	23/3/2017	30/3/2017	-	-		0.011
	pH	pH		1	23/3/2017	30/3/2017	-	-		8.13
	Standing Water Level	metres		1	23/3/2017	30/3/2017	-	-		8.92
13	Conductivity	ms/cm	Quarterly	0	-	-	-	-		-
	Oil & Grease	mg/L		0	-	-	-	-		-
	pH	pH		0	-	-	-	-		-
	TSS	mg/L		0	-	-	-	-		-



Table 4 – Monitoring (Noise – Limits Apply)

EPL ID	Date	Start Time	Measurement period	Measured Levels – dB(A) Leq 15min Day	Measured Levels – dB(A) Leq 15min Evening	Measured Levels – dB(A) Leq 15min Night	Measured Levels – dB(A) LA1 (1 min) Night	Limit	Wind Speed (m/s)	Stability Category	Compliant (Yes/No)	Date Obtained
TN2	1/3/2017	12:05	90	<25				35	0.3	A	Yes	31/3/2017
	1/3/2017	21:30	30		IA			35	0.8	F	Yes	
	1/3/2017	22:45	60			<20		35	0.4	F	Yes	
	1/3/2017	22:45	60				27	45	0.4	F	Yes	
	2/3/2017	17:30	90	28				35	2.1	C	Yes	
	2/3/2017	18:15	30		<20			35	0.6	F	Yes	
	2/3/2017	22:15	60			<20		35	0	D	Yes	
	2/3/2017	22:15	60				<20	45	0	D	Yes	



Table 5 – Monitoring (Noise – Limits Apply)

EPL ID	Date	Start Time	Measurement period	Measured Levels – dB(A) Leq 15min Day	Measured Levels – dB(A) Leq 15min Evening	Measured Levels – dB(A) Leq 15min Night	Measured Levels – dB(A) LA1 (1 min) Night	Limit	Wind Speed (m/s)	Stability Category	Compliant (Yes/No)	Date Obtained
TN3	1/3/2017	13:15	90	IA				35	1.2	A	Yes	31/3/17
	1/3/2017	21:17	30		32			35	1	F	Yes	
	1/3/2017	22:41	60			<30		35	0.6	F	Yes	
	1/3/2017	22:41	60				42	45	0.6	F	Yes	
	2/3/2017	11:55	90	IA				35	0.7	A	Yes	
	2/3/2017	19:00	30		IA			35	0.8	E	Yes	
	2/3/2017	22:45	60			IA		35	0.9	E	Yes	
	2/3/2017	22:45	60				IA	45	0.9	E	Yes	



Table 6 – Monitoring (Noise – Limits Apply)

EPL ID	Date	Start Time	Measurement period	Measured Levels – dB(A) Leq 15min Day	Measured Levels – dB(A) Leq 15min Evening	Measured Levels – dB(A) Leq 15min Night	Measured Levels – dB(A) LA1 (1 min) Night	Limit	Wind Speed (m/s)	Stability Category	Compliant (Yes/No)	Date Obtained
TN4	1/3/2017	11:15	90	IA				35	1.2	A	Yes	31/3/2017
	1/3/2017	20:47	30		<25			35	1	F	Yes	
	2/3/2017	00:13	60			<30		35	0.8	F	Yes	
	2/3/2017	00:13	60				36	45	0.8	F	Yes	
	2/3/2017	10:10	90	IA				35	0.4	A	Yes	
	2/3/2017	21:23	30		IA			35	0	D	Yes	
	2/3/2017	22:18	60			IA		35	1.2	D	Yes	
2/3/2017	22:18	60				IA	45	1.2	D	Yes		



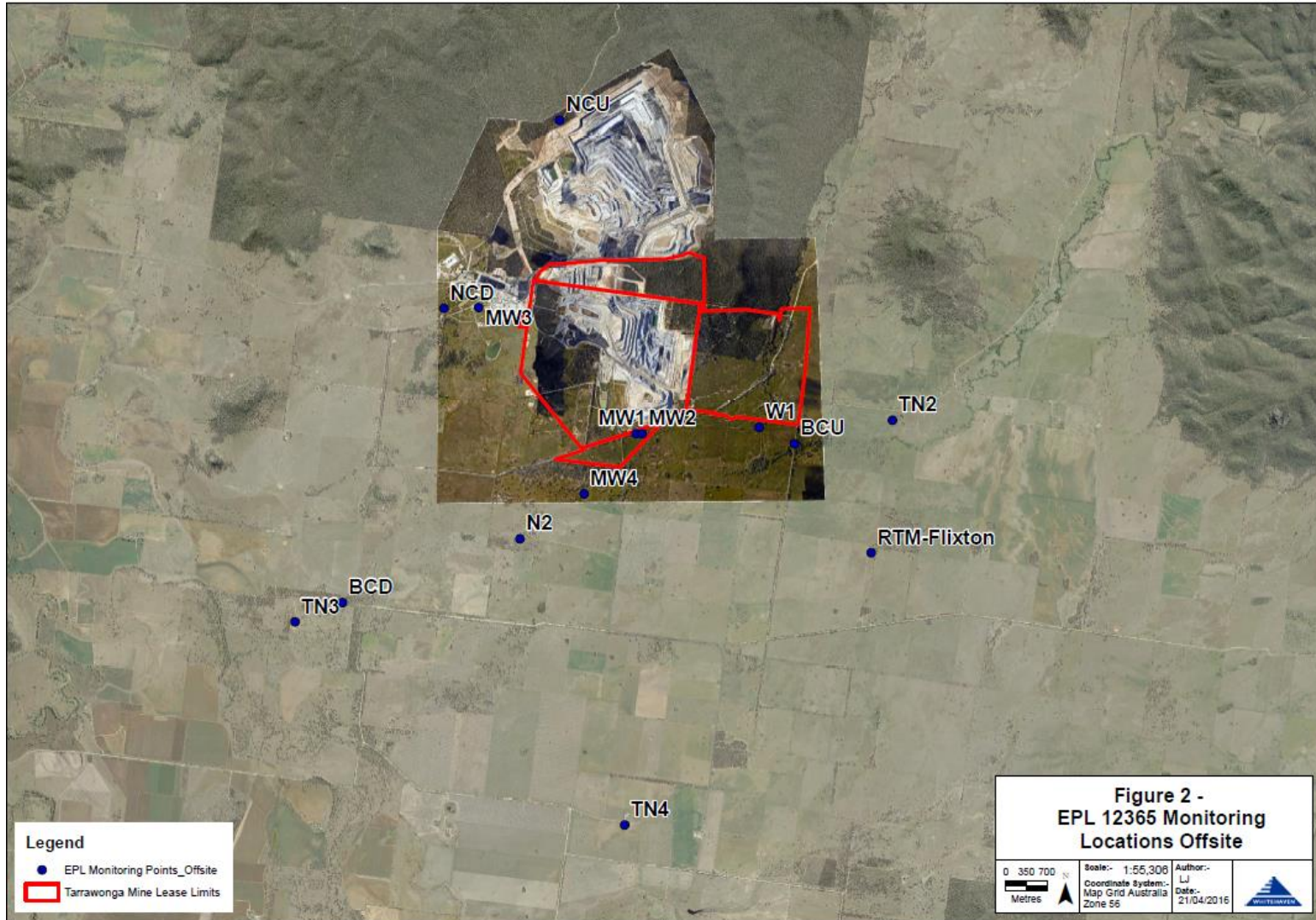
Table 7 – Monitoring (Blasts – Limits Apply)

Location	Parameter	Units of Measure	Frequency	No. of Blasts for the Month	Average Value	Max Value	100%ile Limit	(Potential) Non-compliance /breach	Date Obtained
Tarrawonga	Blast Noise	dB (Lin Peak)	Every Blast	7	100.4	115.7	120	Nil	30/3/2017
	Blast Vibration	mm/s	Every Blast	7	0.48	0.89	10	Nil	30/3/2017

Figure 1 – EPL 12365 Onsite Monitoring Locations



Figure 2 – EPL 12365 Offsite Monitoring Locations





TARRAWONGA COAL MINE – MONTHLY MONITORING SUMMARY

Site Information

EPL No: 12365

EPA Website Link: <http://www.epa.nsw.gov.au/prpoeoapp/ViewPOEOLicence.aspx?DOCID=55113&SYSUID=1&LICID=12365>

Licensee: Tarrawonga Coal Pty Ltd

Licensee Address: Tarrawonga Coal Mine, 469 Goonbri Road, BOGGABRI NSW 2382

EPL Monitoring Points: See Figure 1 and 2 below

Sampling Period: April 2017

Obtained Date: 28 April 2017

Publication Date: 10 May 2017

Table 1 - No Pollutant Limits Apply

EPL ID	Pollutant	Units of Measure	Monitoring Frequency	No. of Samples for the Month	Date Sampled	Date Obtained	Min Value	Mean Value	Median Value	Max or Only Value
5	TSS	mg/L	Upon discharge	0	-	-	-	-	-	-
	Conductivity	ms/cm		0	-	-	-	-	-	-
	Oil & Grease	mg/L		0	-	-	-	-	-	-
	pH	pH		0	-	-	-	-	-	-
6	TSS	mg/L	Upon discharge	0	-	-	-	-	-	-
	Conductivity	ms/cm		0	-	-	-	-	-	-
	Oil & Grease	mg/L		0	-	-	-	-	-	-
	pH	pH		0	-	-	-	-	-	-
7	TSS	mg/L	Upon discharge	0	-	-	-	-	-	-
	Conductivity	ms/cm		0	-	-	-	-	-	-
	Oil & Grease	mg/L		0	-	-	-	-	-	-
	pH	pH		0	-	-	-	-	-	-
8	TSS	mg/L	Upon discharge	0	-	-	-	-	-	-
	Conductivity	ms/cm		0	-	-	-	-	-	-
	Oil & Grease	mg/L		0	-	-	-	-	-	-



EPL ID	Pollutant	Units of Measure	Monitoring Frequency	No. of Samples for the Month	Date Sampled	Date Obtained	Min Value	Mean Value	Median Value	Max or Only Value
	pH	pH		0	-	-	-	-	-	-

Table 2 - Pollutant Limits Apply

EPL ID	Pollutant	Units of Measure	Monitoring Frequency	No. of Samples for the Month	Date Sampled	Date Obtained	Min Value	Max or Only Value	100%ile Limit	Exceedance (Yes/No)	Comments
1	TSS	mg/L	Upon discharge	0	-	-	-	-		-	-
	Oil & Grease	mg/L		0	-	-	-	-		-	-
	pH	pH		0	-	-	-	-		-	-
2	TSS	mg/L	Upon discharge	0	-	-	-	-		-	-
	Oil & Grease	mg/L		0	-	-	-	-		-	-
	pH	pH		0	-	-	-	-		-	-
3	TSS	mg/L	Upon discharge	0	-	-	-	-		-	-
	Oil & Grease	mg/L		0	-	-	-	-		-	-
	pH	pH		0	-	-	-	-		-	-
24	TSS	mg/L	Upon discharge	0	-	-	-	-		-	-
	Oil & Grease	mg/L		0	-	-	-	-		-	-
	pH	pH		0	-	-	-	-		-	-
25	TSS	mg/L	Upon discharge	0	-	-	-	-		-	-
	Oil & Grease	mg/L		0	-	-	-	-		-	-
	pH	pH		0	-	-	-	-		-	-
26	TSS	mg/L	Upon discharge	0	-	-	-	-		-	-
	Oil & Grease	mg/L		0	-	-	-	-		-	-
	pH	pH		0	-	-	-	-		-	-
27	TSS	mg/L	Upon discharge	0	-	-	-	-		-	-
	Oil & Grease	mg/L		0	-	-	-	-		-	-
	pH	pH		0	-	-	-	-		-	-



Table 3 – Monitoring (Quarterly & 6 Monthly – No Limits apply)

EPL ID	Pollutant	Units of Measure	Monitoring Frequency	No. of Samples for the Period	Date Sampled	Date Obtained	Min Value	Mean Value	Median Value	Max or Only Value
9	Conductivity	ms/cm	6 monthly	0	-	-	-	-		
	Lead	mg/L		0	-	-	-	-		
	pH	pH		0	-	-	-	-		
	Standing Water Level	metres		0	-	-	-	-		
10	Conductivity	ms/cm	6 monthly	0	-	-	-	-		
	Lead	mg/L		0	-	-	-	-		
	pH	pH		0	-	-	-	-		
	Standing Water Level	metres		0	-	-	-	-		
11	Conductivity	ms/cm	6 monthly	0	-	-	-	-		-
	Lead	mg/L		0	-	-	-	-		-
	pH	pH		0	-	-	-	-		-
	Standing Water Level	metres		0	-	-	-	-		-
12	Conductivity	ms/cm	6 monthly	0	-	-	-	-		
	Lead	mg/L		0	-	-	-	-		
	pH	pH		0	-	-	-	-		
	Standing Water Level	metres		0	-	-	-	-		
13	Conductivity	ms/cm	Quarterly	0	-	-	-	-		
	Oil & Grease	mg/L		0	-	-	-	-		
	pH	pH		0	-	-	-	-		
	TSS	mg/L		0	-	-	-	-		



Table 4 – Monitoring (Noise – Limits Apply)

EPL ID	Date	Start Time	Measurement period	Measured Levels – dB(A) Leq 15min Day	Measured Levels – dB(A) Leq 15min Evening	Measured Levels – dB(A) Leq 15min Night	Measured Levels – dB(A) LA1 (1 min) Night	Limit	Wind Speed (m/s)	Stability Category	Compliant (Yes/No)	Date Obtained
TN2, TN3, TN4												No Monitoring



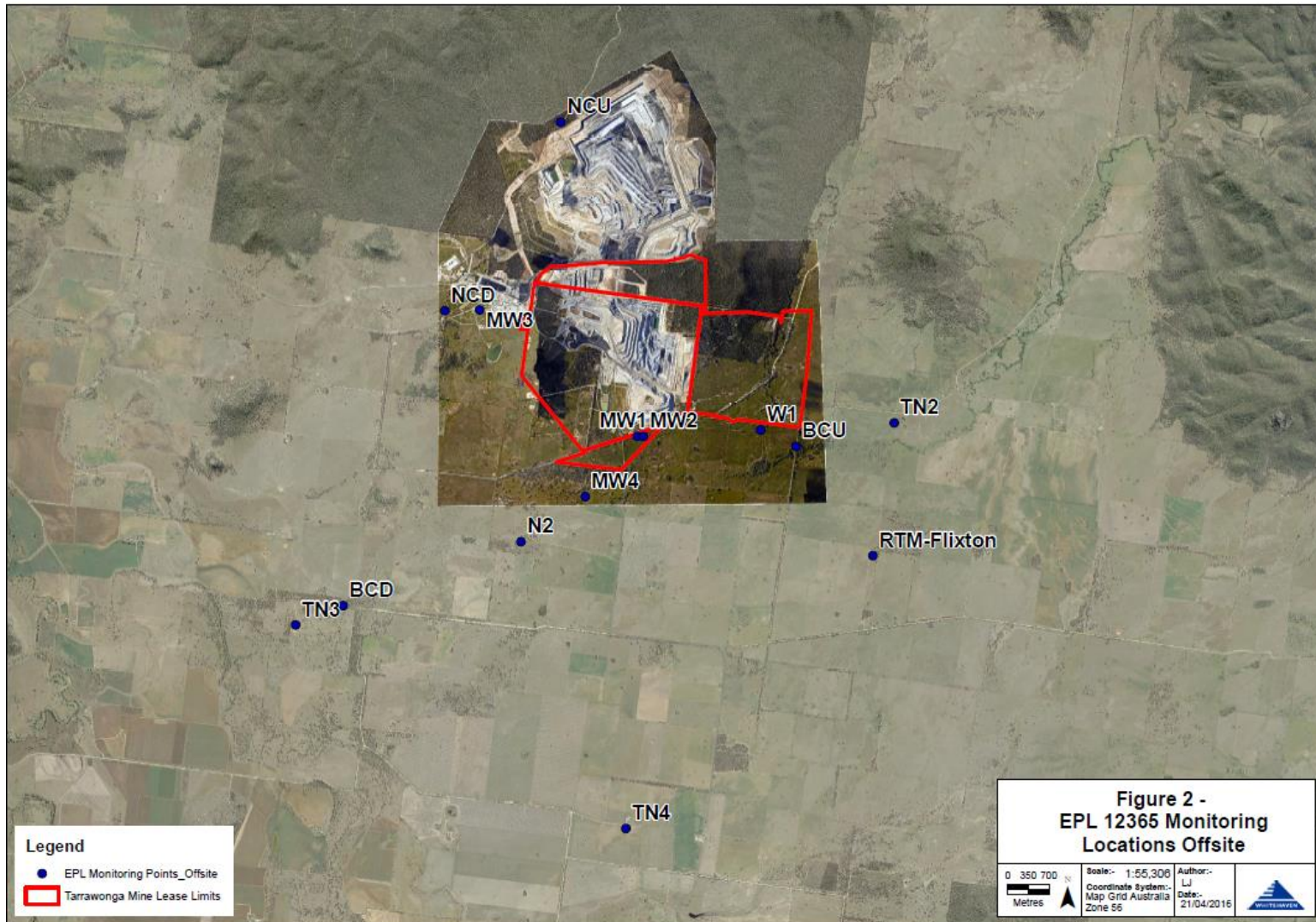
Table 5 – Monitoring (Blasts – Limits Apply)

Location	Parameter	Units of Measure	Frequency	No. of Blasts for the Month	Average Value	Max Value	100%ile Limit	(Potential) Non-compliance /breach	Date Obtained
Tarrawonga	Blast Noise	dB (Lin Peak)	Every Blast	6	102.5	111.8	120	Nil	28/4/2017
	Blast Vibration	mm/s	Every Blast	6	0.57	1.44	10	Nil	28/4/2017

Figure 1 – EPL 12365 Onsite Monitoring Locations



Figure 2 – EPL 12365 Offsite Monitoring Locations





TARRAWONGA COAL MINE – MONTHLY MONITORING SUMMARY

Site Information

EPL No: 12365

EPA Website Link: <http://www.epa.nsw.gov.au/prpoeoapp/ViewPOEOLicence.aspx?DOCID=55113&SYSUID=1&LICID=12365>

Licensee: Tarrawonga Coal Pty Ltd

Licensee Address: Tarrawonga Coal Mine, 469 Goonbri Road, BOGGABRI NSW 2382

EPL Monitoring Points: See Figure 1 and 2 below

Sampling Period: May 2017

Obtained Date: 30 June 2017

Publication Date: 6 July 2017

Table 1 - No Pollutant Limits Apply

EPL ID	Pollutant	Units of Measure	Monitoring Frequency	No. of Samples for the Month	Date Sampled	Date Obtained	Min Value	Mean Value	Median Value	Max or Only Value
5	TSS	mg/L	Upon discharge	0	-	-	-	-	-	-
	Conductivity	ms/cm		0	-	-	-	-	-	-
	Oil & Grease	mg/L		0	-	-	-	-	-	-
	pH	pH		0	-	-	-	-	-	-
6	TSS	mg/L	Upon discharge	0	-	-	-	-	-	-
	Conductivity	ms/cm		0	-	-	-	-	-	-
	Oil & Grease	mg/L		0	-	-	-	-	-	-
	pH	pH		0	-	-	-	-	-	-
7	TSS	mg/L	Upon discharge	0	-	-	-	-	-	-
	Conductivity	ms/cm		0	-	-	-	-	-	-
	Oil & Grease	mg/L		0	-	-	-	-	-	-
	pH	pH		0	-	-	-	-	-	-
8	TSS	mg/L	Upon discharge	0	-	-	-	-	-	-
	Conductivity	ms/cm		0	-	-	-	-	-	-
	Oil & Grease	mg/L		0	-	-	-	-	-	-



EPL ID	Pollutant	Units of Measure	Monitoring Frequency	No. of Samples for the Month	Date Sampled	Date Obtained	Min Value	Mean Value	Median Value	Max or Only Value
	pH	pH		0	-	-	-	-	-	-

Table 2 - Pollutant Limits Apply

EPL ID	Pollutant	Units of Measure	Monitoring Frequency	No. of Samples for the Month	Date Sampled	Date Obtained	Min Value	Max or Only Value	100%ile Limit	Exceedance (Yes/No)	Comments
1	TSS	mg/L	Upon discharge	0	-	-	-	-		-	-
	Oil & Grease	mg/L		0	-	-	-	-		-	-
	pH	pH		0	-	-	-	-		-	-
2	TSS	mg/L	Upon discharge	0	-	-	-	-		-	-
	Oil & Grease	mg/L		0	-	-	-	-		-	-
	pH	pH		0	-	-	-	-		-	-
3	TSS	mg/L	Upon discharge	0	-	-	-	-		-	-
	Oil & Grease	mg/L		0	-	-	-	-		-	-
	pH	pH		0	-	-	-	-		-	-
24	TSS	mg/L	Upon discharge	0	-	-	-	-		-	-
	Oil & Grease	mg/L		0	-	-	-	-		-	-
	pH	pH		0	-	-	-	-		-	-
25	TSS	mg/L	Upon discharge	0	-	-	-	-		-	-
	Oil & Grease	mg/L		0	-	-	-	-		-	-
	pH	pH		0	-	-	-	-		-	-
26	TSS	mg/L	Upon discharge	0	-	-	-	-		-	-
	Oil & Grease	mg/L		0	-	-	-	-		-	-
	pH	pH		0	-	-	-	-		-	-
27	TSS	mg/L	Upon discharge	0	-	-	-	-		-	-
	Oil & Grease	mg/L		0	-	-	-	-		-	-
	pH	pH		0	-	-	-	-		-	-



Table 3 – Monitoring (Quarterly & 6 Monthly – No Limits apply)

EPL ID	Pollutant	Units of Measure	Monitoring Frequency	No. of Samples for the Period	Date Sampled	Date Obtained	Min Value	Mean Value	Median Value	Max or Only Value
9	Conductivity	ms/cm	6 monthly	0	-	-	-	-		
	Lead	mg/L		0	-	-	-	-		
	pH	pH		0	-	-	-	-		
	Standing Water Level	metres		0	-	-	-	-		
10	Conductivity	ms/cm	6 monthly	0	-	-	-	-		
	Lead	mg/L		0	-	-	-	-		
	pH	pH		0	-	-	-	-		
	Standing Water Level	metres		0	-	-	-	-		
11	Conductivity	ms/cm	6 monthly	0	-	-	-	-		
	Lead	mg/L		0	-	-	-	-		
	pH	pH		0	-	-	-	-		
	Standing Water Level	metres		0	-	-	-	-		
12	Conductivity	ms/cm	6 monthly	0	-	-	-	-		
	Lead	mg/L		0	-	-	-	-		
	pH	pH		0	-	-	-	-		
	Standing Water Level	metres		0	-	-	-	-		
13	Conductivity	ms/cm	Quarterly	1	9/5/17	18/5/17	-	-		3100
	Oil & Grease	mg/L		1	9/5/17	18/5/17	-	-		<5
	pH	pH		1	9/5/17	18/5/17	-	-		8.38
	TSS	mg/L		1	9/5/17	18/5/17	-	-		12



Table 4 – Monitoring (Noise – Limits Apply)

EPL ID	Date	Start Time	Measurement period	Measured Levels – dB(A) Leq 15min Day	Measured Levels – dB(A) Leq 15min Evening	Measured Levels – dB(A) Leq 15min Night	Measured Levels – dB(A) LA1 (1 min) Night	Limit	Wind Speed (m/s)	Stability Class	Compliant (Yes/No)	Date Obtained
TN2	29/5/17	14:37	90	21				35	0.7	241	Yes	30/6/2017
	29/5/17	21:40	30		30			35	1.7	17	Yes	
	29/5/17	22:00	60			29		35	1.1	5	Yes	
	29/5/17	22:30	60				40	45	1.2	24	Yes	
	30/5/17	11:40	90	21				35	1.6	224	Yes	
	30/5/17	21:25	30		IA			35	1.7	49	Yes	
	30/5/17	22:45	60			28		35	1.9	40	Yes	
	30/5/17	22:45	60				42	45	1.9	40	Yes	
	31/5/17	17:15	90	32				35	0.9	203	Yes	
	31/5/17	21:50	30		<20			35	1.0	2	Yes	
	31/5/17	22:05	60			<20		35	1.0	2	Yes	
	31/5/17	22:05	60				<20	45	1.0	2	Yes	



Table 5 – Monitoring (Noise – Limits Apply)

EPL ID	Date	Start Time	Measurement period	Measured Levels – dB(A) Leq 15min Day	Measured Levels – dB(A) Leq 15min Evening	Measured Levels – dB(A) Leq 15min Night	Measured Levels – dB(A) LA1 (1 min) Night	Limit	Wind Speed (m/s)	Stability Class	Compliant (Yes/No)	Date Obtained
TN3	29/5/17	16:26	90	IA				35	1.0	111	Yes	30/6/17
	29/5/17	20:48	30		IA			35	1.2	26	Yes	
	29/5/17	23:17	60			IA		35	0.7	30	Yes	
	29/5/17	23:17	60				IA	45	0.7	30	Yes	
	30/5/17	13:15	90	IA				35	2.1	217	Yes	
	30/5/17	21:25	30		IA			35	1.7	49	Yes	
	30/5/17	22:00	60			IA		35	1.9	34	Yes	
	30/5/17	22:45	60				30	45	NA	NA	Yes	
	31/5/17	12:54	90	IA				35	2.1	228	Yes	
	31/5/17	18:00	30		IA			35	1.8	199	Yes	
	31/5/17	23:15	60			25		35	NA	NA	Yes	
	31/5/17	23:15	60				37	45	NA	NA	Yes	



Table 6 – Monitoring (Noise – Limits Apply)

EPL ID	Date	Start Time	Measurement period	Measured Levels – dB(A) Leq 15min Day	Measured Levels – dB(A) Leq 15min Evening	Measured Levels – dB(A) Leq 15min Night	Measured Levels – dB(A) LA1 (1 min) Night	Limit	Wind Speed (m/s)	Stability Class	Compliant (Yes/No)	Date Obtained
TN4	29/5/17	13:14	90	IA				35	2.5	211	Yes	30/6/17
	29/5/17	20:04	30		IA			35	1.4	250	Yes	
	30/5/17	1:03	60			IA		35	1.0	25	Yes	
	30/5/17	1:03	60				IA	45	1.0	25	Yes	
	30/5/17	12:00	90	<20				35	1.6	235	Yes	
	30/5/17	20:42	30		23			35	0		Yes	
	31/5/17	23:45	60			IA		35	NA	NA	Yes	
	31/5/17	23:45	60				IA	45	NA	NA	Yes	
	31/5/17	15:24	90	IA				35	3.0	205	Yes	
	31/5/17	18:45	30		IA			35	1.0	36	Yes	

NR – Not recorded



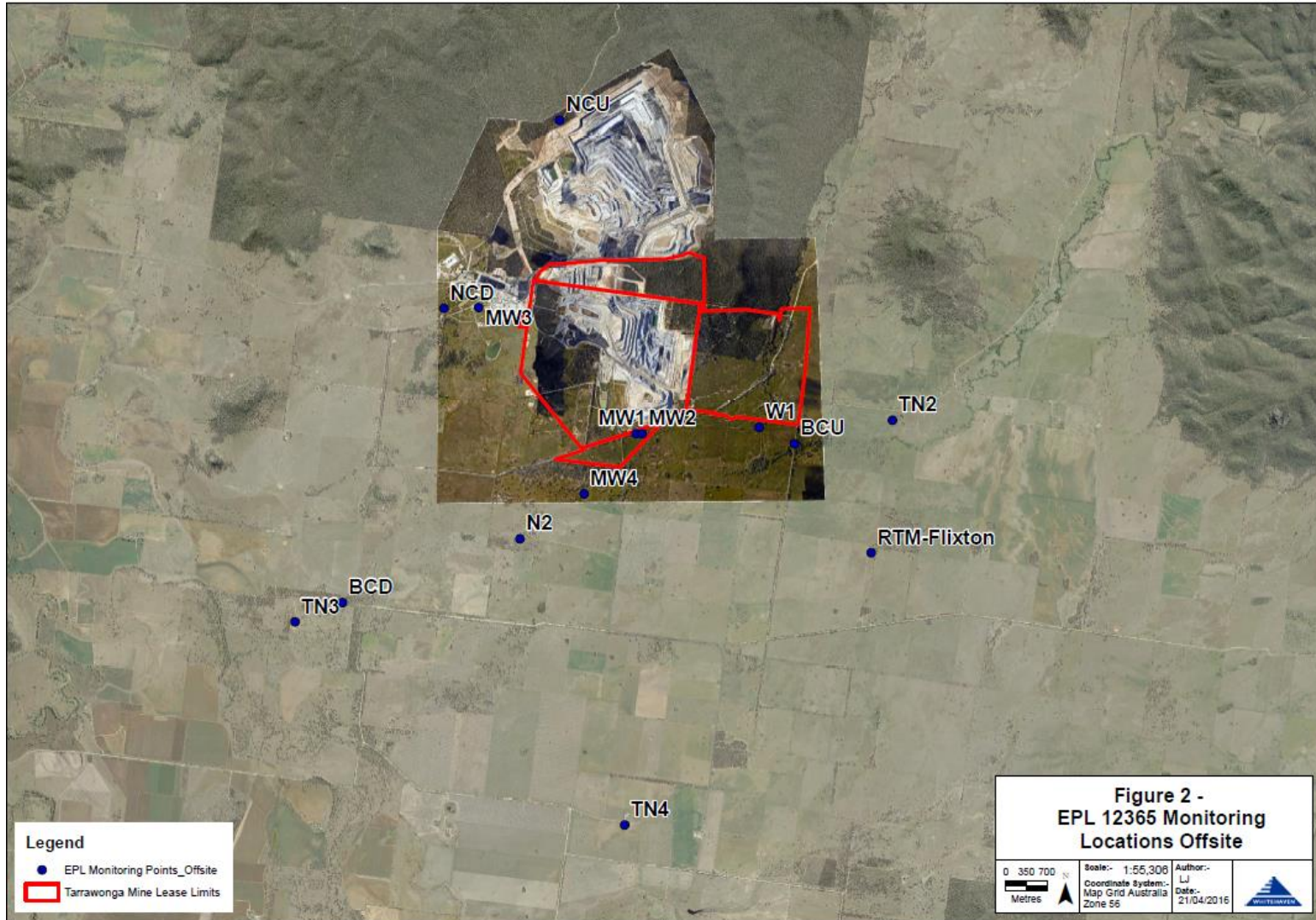
Table 7 – Monitoring (Blasts – Limits Apply)

Location	Parameter	Units of Measure	Frequency	No. of Blasts for the Month	Average Value	Max Value	100%ile Limit	(Potential) Non-compliance /breach	Date Obtained
Tarrawonga	Blast Noise	dB (Lin Peak)	Every Blast	12	99.7	107.6	120	Nil	31/5/2017
	Blast Vibration	mm/s	Every Blast	12	0.21	0.42	10	Nil	31/5/2017

Figure 1 – EPL 12365 Onsite Monitoring Locations



Figure 2 – EPL 12365 Offsite Monitoring Locations





TARRAWONGA COAL MINE – MONTHLY MONITORING SUMMARY

Site Information

EPL No: 12365

EPA Website Link: <http://www.epa.nsw.gov.au/prpoeoapp/ViewPOEOLicence.aspx?DOCID=55113&SYSUID=1&LICID=12365>

Licensee: Tarrawonga Coal Pty Ltd

Licensee Address: Tarrawonga Coal Mine, 469 Goonbri Road, BOGGABRI NSW 2382

EPL Monitoring Points: See Figure 1 and 2 below

Sampling Period: June 2017

Obtained Date: 30 June 2017

Publication Date: 6 July 2017

Table 1 - No Pollutant Limits Apply

EPL ID	Pollutant	Units of Measure	Monitoring Frequency	No. of Samples for the Month	Date Sampled	Date Obtained	Min Value	Mean Value	Median Value	Max or Only Value
5	TSS	mg/L	Upon discharge	0	-	-	-	-	-	-
	Conductivity	ms/cm		0	-	-	-	-	-	-
	Oil & Grease	mg/L		0	-	-	-	-	-	-
	pH	pH		0	-	-	-	-	-	-
6	TSS	mg/L	Upon discharge	0	-	-	-	-	-	-
	Conductivity	ms/cm		0	-	-	-	-	-	-
	Oil & Grease	mg/L		0	-	-	-	-	-	-
	pH	pH		0	-	-	-	-	-	-
7	TSS	mg/L	Upon discharge	0	-	-	-	-	-	-
	Conductivity	ms/cm		0	-	-	-	-	-	-
	Oil & Grease	mg/L		0	-	-	-	-	-	-
	pH	pH		0	-	-	-	-	-	-
8	TSS	mg/L	Upon discharge	0	-	-	-	-	-	-
	Conductivity	ms/cm		0	-	-	-	-	-	-
	Oil & Grease	mg/L		0	-	-	-	-	-	-



EPL ID	Pollutant	Units of Measure	Monitoring Frequency	No. of Samples for the Month	Date Sampled	Date Obtained	Min Value	Mean Value	Median Value	Max or Only Value
	pH	pH		0	-	-	-	-	-	-

Table 2 - Pollutant Limits Apply

EPL ID	Pollutant	Units of Measure	Monitoring Frequency	No. of Samples for the Month	Date Sampled	Date Obtained	Min Value	Max or Only Value	100%ile Limit	Exceedance (Yes/No)	Comments
1	TSS	mg/L	Upon discharge	0	-	-	-	-		-	-
	Oil & Grease	mg/L		0	-	-	-	-		-	-
	pH	pH		0	-	-	-	-		-	-
2	TSS	mg/L	Upon discharge	0	-	-	-	-		-	-
	Oil & Grease	mg/L		0	-	-	-	-		-	-
	pH	pH		0	-	-	-	-		-	-
3	TSS	mg/L	Upon discharge	0	-	-	-	-		-	-
	Oil & Grease	mg/L		0	-	-	-	-		-	-
	pH	pH		0	-	-	-	-		-	-
24	TSS	mg/L	Upon discharge	0	-	-	-	-		-	-
	Oil & Grease	mg/L		0	-	-	-	-		-	-
	pH	pH		0	-	-	-	-		-	-
25	TSS	mg/L	Upon discharge	0	-	-	-	-		-	-
	Oil & Grease	mg/L		0	-	-	-	-		-	-
	pH	pH		0	-	-	-	-		-	-
26	TSS	mg/L	Upon discharge	0	-	-	-	-		-	-
	Oil & Grease	mg/L		0	-	-	-	-		-	-
	pH	pH		0	-	-	-	-		-	-
27	TSS	mg/L	Upon discharge	0	-	-	-	-		-	-
	Oil & Grease	mg/L		0	-	-	-	-		-	-
	pH	pH		0	-	-	-	-		-	-



Table 3 – Monitoring (Quarterly & 6 Monthly – No Limits apply)

EPL ID	Pollutant	Units of Measure	Monitoring Frequency	No. of Samples for the Period	Date Sampled	Date Obtained	Min Value	Mean Value	Median Value	Max or Only Value
9	Conductivity	ms/cm	6 monthly	0	-	-	-	-		
	Lead	mg/L		0	-	-	-	-		
	pH	pH		0	-	-	-	-		
	Standing Water Level	metres		0	-	-	-	-		
10	Conductivity	ms/cm	6 monthly	0	-	-	-	-		
	Lead	mg/L		0	-	-	-	-		
	pH	pH		0	-	-	-	-		
	Standing Water Level	metres		0	-	-	-	-		
11	Conductivity	ms/cm	6 monthly	0	-	-	-	-		
	Lead	mg/L		0	-	-	-	-		
	pH	pH		0	-	-	-	-		
	Standing Water Level	metres		0	-	-	-	-		
12	Conductivity	ms/cm	6 monthly	0	-	-	-	-		
	Lead	mg/L		0	-	-	-	-		
	pH	pH		0	-	-	-	-		
	Standing Water Level	metres		0	-	-	-	-		
13	Conductivity	ms/cm	Quarterly	0	-	-	-	-		
	Oil & Grease	mg/L		0	-	-	-	-		
	pH	pH		0	-	-	-	-		
	TSS	mg/L		0	-	-	-	-		



Table 4 – Monitoring (Noise – Limits Apply)

EPL ID	Date	Start Time	Measurement period	Measured Levels – dB(A) Leq 15min Day	Measured Levels – dB(A) Leq 15min Evening	Measured Levels – dB(A) Leq 15min Night	Measured Levels – dB(A) LA1 (1 min) Night	Limit	Wind Speed (m/s)	Stability Class	Compliant (Yes/No)	Date Obtained
TN2	1/6/17	11:48	90	<20				35	2.9	170	Yes	30/6/2017
	1/6/17	21:45	30		<20			35	0.7	50	Yes	
	1/6/17	22:15	60			<20		35	NA	NA	Yes	
	1/6/17	22:15	60				<20	45	NA	NA	Yes	



Table 5 – Monitoring (Noise – Limits Apply)

EPL ID	Date	Start Time	Measurement period	Measured Levels – dB(A) Leq 15min Day	Measured Levels – dB(A) Leq 15min Evening	Measured Levels – dB(A) Leq 15min Night	Measured Levels – dB(A) LA1 (1 min) Night	Limit	Wind Speed (m/s)	Stability Class	Compliant (Yes/No)	Date Obtained
TN3	1/6/17	12:30	90	IA				35	2.6	154	Yes	30/6/17
	1/6/17	21:00	30		<20			35	1.5	53	Yes	
	1/6/17	23:13	60			27		35	NA	NA	Yes	
	1/6/19	23:59	60				35	45	NA	NA	Yes	



Table 6 – Monitoring (Noise – Limits Apply)

EPL ID	Date	Start Time	Measurement period	Measured Levels – dB(A) L _{eq} 15min Day	Measured Levels – dB(A) L _{eq} 15min Evening	Measured Levels – dB(A) L _{eq} 15min Night	Measured Levels – dB(A) L _{A1} (1 min) Night	Limit	Wind Speed (m/s)	Stability Class	Compliant (Yes/No)	Date Obtained
TN4	1/6/17	00:15	60			IA		34	NA	NA	Yes	30/6/2017
	1/6/17	00:15	60				IA	45	NA	NA	Yes	
	1/6/17	14:15	90	IA				35	3.4	159	Yes	
	1/6/17	21:27	30		IA			35	0.7	50	Yes	
	1/6/17	22:01	60			IA		35	NA	NA	Yes	
	1/6/17		60				IA	45	NA	NA	Yes	

NR – Not recorded



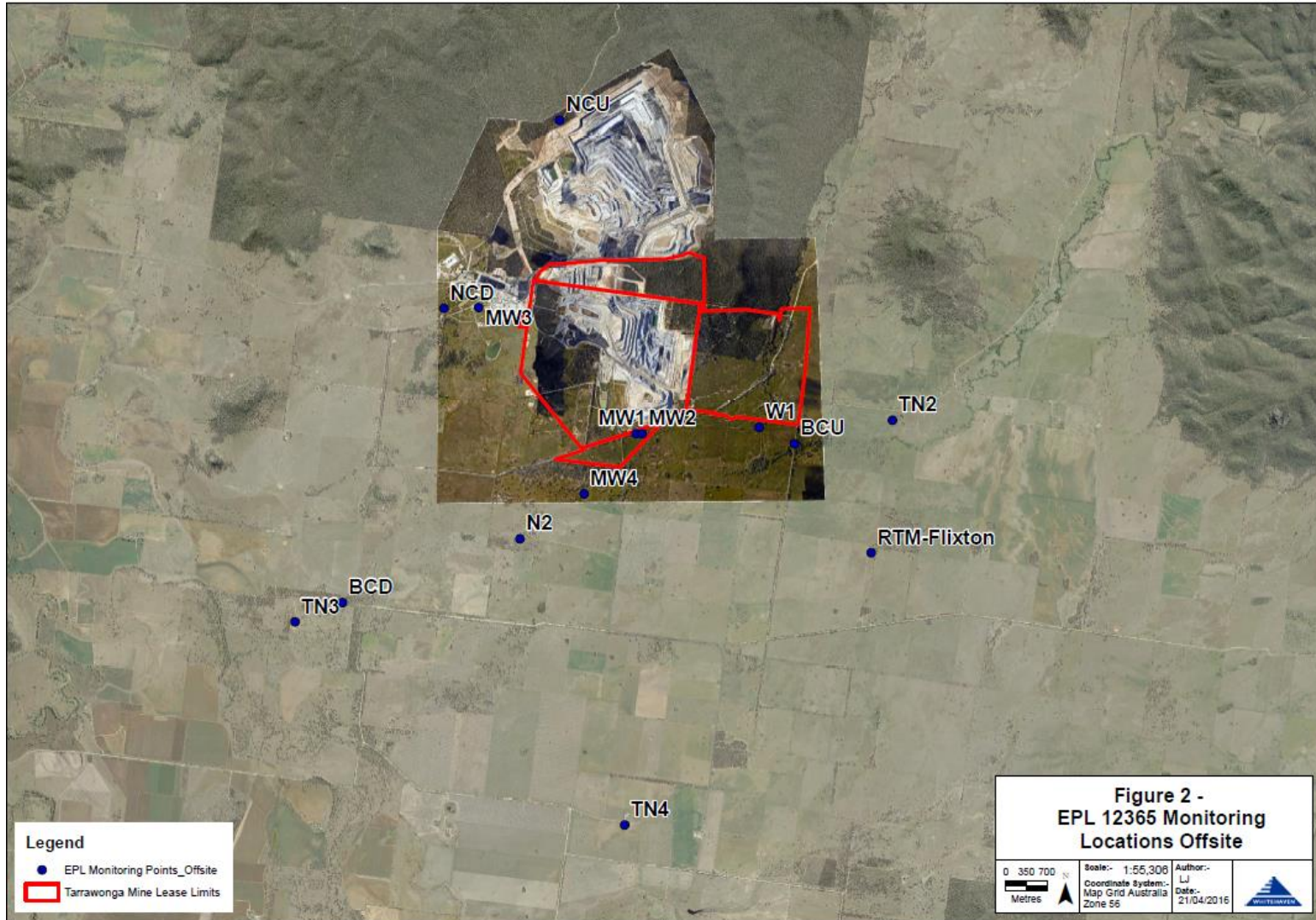
Table 7 – Monitoring (Blasts – Limits Apply)

Location	Parameter	Units of Measure	Frequency	No. of Blasts for the Month	Average Value	Max Value	100%ile Limit	(Potential) Non-compliance /breach	Date Obtained
Tarrawonga	Blast Noise	dB (Lin Peak)	Every Blast	8	97.6	110.6	120	Nil	29/6/2017
	Blast Vibration	mm/s	Every Blast	8	0.23	0.51	10	Nil	29/6/2017

Figure 1 – EPL 12365 Onsite Monitoring Locations



Figure 2 – EPL 12365 Offsite Monitoring Locations





WHITEHAVEN COAL

TARRAWONGA COAL MINE – MONTHLY MONITORING SUMMARY

Site Information

EPL No: 12365

EPA Website Link: <http://www.epa.nsw.gov.au/prpoeoapp/ViewPOEOLicence.aspx?DOCID=55113&SYSUID=1&LICID=12365>

Licensee: Tarrawonga Coal Pty Ltd

Licensee Address: Tarrawonga Coal Mine, 469 Goonbri Road, BOGGABRI NSW 2382

EPL Monitoring Points: See Figure 1 and 2 below

Sampling Period: July 2017

Obtained Date: 29 July 2017

Publication Date: 3 August 2017

Table 1 - No Pollutant Limits Apply

EPL ID	Pollutant	Units of Measure	Monitoring Frequency	No. of Samples for the Month	Date Sampled	Date Obtained	Min Value	Mean Value	Median Value	Max or Only Value
5	TSS	mg/L	Upon discharge	0	-	-	-	-	-	-
	Conductivity	ms/cm		0	-	-	-	-	-	-
	Oil & Grease	mg/L		0	-	-	-	-	-	-
	pH	pH		0	-	-	-	-	-	-
6	TSS	mg/L	Upon discharge	0	-	-	-	-	-	-
	Conductivity	ms/cm		0	-	-	-	-	-	-
	Oil & Grease	mg/L		0	-	-	-	-	-	-
	pH	pH		0	-	-	-	-	-	-
7	TSS	mg/L	Upon discharge	0	-	-	-	-	-	-
	Conductivity	ms/cm		0	-	-	-	-	-	-
	Oil & Grease	mg/L		0	-	-	-	-	-	-
	pH	pH		0	-	-	-	-	-	-
8	TSS	mg/L	Upon discharge	0	-	-	-	-	-	-
	Conductivity	ms/cm		0	-	-	-	-	-	-
	Oil & Grease	mg/L		0	-	-	-	-	-	-



WHITEHAVEN COAL

EPL ID	Pollutant	Units of Measure	Monitoring Frequency	No. of Samples for the Month	Date Sampled	Date Obtained	Min Value	Mean Value	Median Value	Max or Only Value
	pH	pH		0	-	-	-	-	-	-

Table 2 - Pollutant Limits Apply

EPL ID	Pollutant	Units of Measure	Monitoring Frequency	No. of Samples for the Month	Date Sampled	Date Obtained	Min Value	Max or Only Value	100%ile Limit	Exceedance (Yes/No)	Comments
1	TSS	mg/L	Upon discharge	0	-	-	-	-		-	-
	Oil & Grease	mg/L		0	-	-	-	-		-	-
	pH	pH		0	-	-	-	-		-	-
2	TSS	mg/L	Upon discharge	0	-	-	-	-		-	-
	Oil & Grease	mg/L		0	-	-	-	-		-	-
	pH	pH		0	-	-	-	-		-	-
3	TSS	mg/L	Upon discharge	0	-	-	-	-		-	-
	Oil & Grease	mg/L		0	-	-	-	-		-	-
	pH	pH		0	-	-	-	-		-	-
24	TSS	mg/L	Upon discharge	0	-	-	-	-		-	-
	Oil & Grease	mg/L		0	-	-	-	-		-	-
	pH	pH		0	-	-	-	-		-	-
25	TSS	mg/L	Upon discharge	0	-	-	-	-		-	-
	Oil & Grease	mg/L		0	-	-	-	-		-	-
	pH	pH		0	-	-	-	-		-	-
26	TSS	mg/L	Upon discharge	0	-	-	-	-		-	-
	Oil & Grease	mg/L		0	-	-	-	-		-	-
	pH	pH		0	-	-	-	-		-	-
27	TSS	mg/L	Upon discharge	0	-	-	-	-		-	-
	Oil & Grease	mg/L		0	-	-	-	-		-	-
	pH	pH		0	-	-	-	-		-	-



Table 3 – Monitoring (Quarterly & 6 Monthly – No Limits apply)

EPL ID	Pollutant	Units of Measure	Monitoring Frequency	No. of Samples for the Period	Date Sampled	Date Obtained	Min Value	Mean Value	Median Value	Max or Only Value
9	Conductivity	ms/cm	6 monthly	0	-	-	-	-		
	Lead	mg/L		0	-	-	-	-		
	pH	pH		0	-	-	-	-		
	Standing Water Level	metres		0	-	-	-	-		
10	Conductivity	ms/cm	6 monthly	0	-	-	-	-		
	Lead	mg/L		0	-	-	-	-		
	pH	pH		0	-	-	-	-		
	Standing Water Level	metres		0	-	-	-	-		
11	Conductivity	ms/cm	6 monthly	0	-	-	-	-		
	Lead	mg/L		0	-	-	-	-		
	pH	pH		0	-	-	-	-		
	Standing Water Level	metres		0	-	-	-	-		
12	Conductivity	ms/cm	6 monthly	0	-	-	-	-		
	Lead	mg/L		0	-	-	-	-		
	pH	pH		0	-	-	-	-		
	Standing Water Level	metres		0	-	-	-	-		
13	Conductivity	ms/cm	Quarterly	0	-	-	-	-		
	Oil & Grease	mg/L		0	-	-	-	-		
	pH	pH		0	-	-	-	-		
	TSS	mg/L		0	-	-	-	-		



Table 4 – Monitoring (Noise – Limits Apply)

EPL ID	Date	Start Time	Measurement period	Measured Levels – dB(A) Leq 15min Day	Measured Levels – dB(A) Leq 15min Evening	Measured Levels – dB(A) Leq 15min Night	Measured Levels – dB(A) LA1 (1 min) Night	Limit	Wind Speed (m/s)	Stability Class	Compliant (Yes/No)	Date Obtained
TN2	-	-	-	-				-	-	-	-	-
	-	-	-		-			-	-	-	-	
	-	-	-			-		-	-	-	-	
	-	-	-				-	-	-	-	-	



Table 5 – Monitoring (Noise – Limits Apply)

EPL ID	Date	Start Time	Measurement period	Measured Levels – dB(A) Leq 15min Day	Measured Levels – dB(A) Leq 15min Evening	Measured Levels – dB(A) Leq 15min Night	Measured Levels – dB(A) LA1 (1 min) Night	Limit	Wind Speed (m/s)	Stability Class	Compliant (Yes/No)	Date Obtained
TN3	-	-	-	-				-	-	-	-	-
	-	-	-		-			-	-	-	-	
	-	-	-			-		-	-	-	-	
	-	-	-				-	-	-	-	-	



Table 6 – Monitoring (Noise – Limits Apply)

EPL ID	Date	Start Time	Measurement period	Measured Levels – dB(A) Leq 15min Day	Measured Levels – dB(A) Leq 15min Evening	Measured Levels – dB(A) Leq 15min Night	Measured Levels – dB(A) LA1 (1 min) Night	Limit	Wind Speed (m/s)	Stability Class	Compliant (Yes/No)	Date Obtained
TN4	-	-	-	-	-	-	-	-	-	-	-	-
	-	-	-	-	-	-	-	-	-	-	-	-
	-	-	-	-	-	-	-	-	-	-	-	-
	-	-	-	-	-	-	-	-	-	-	-	-

NR – Not recorded



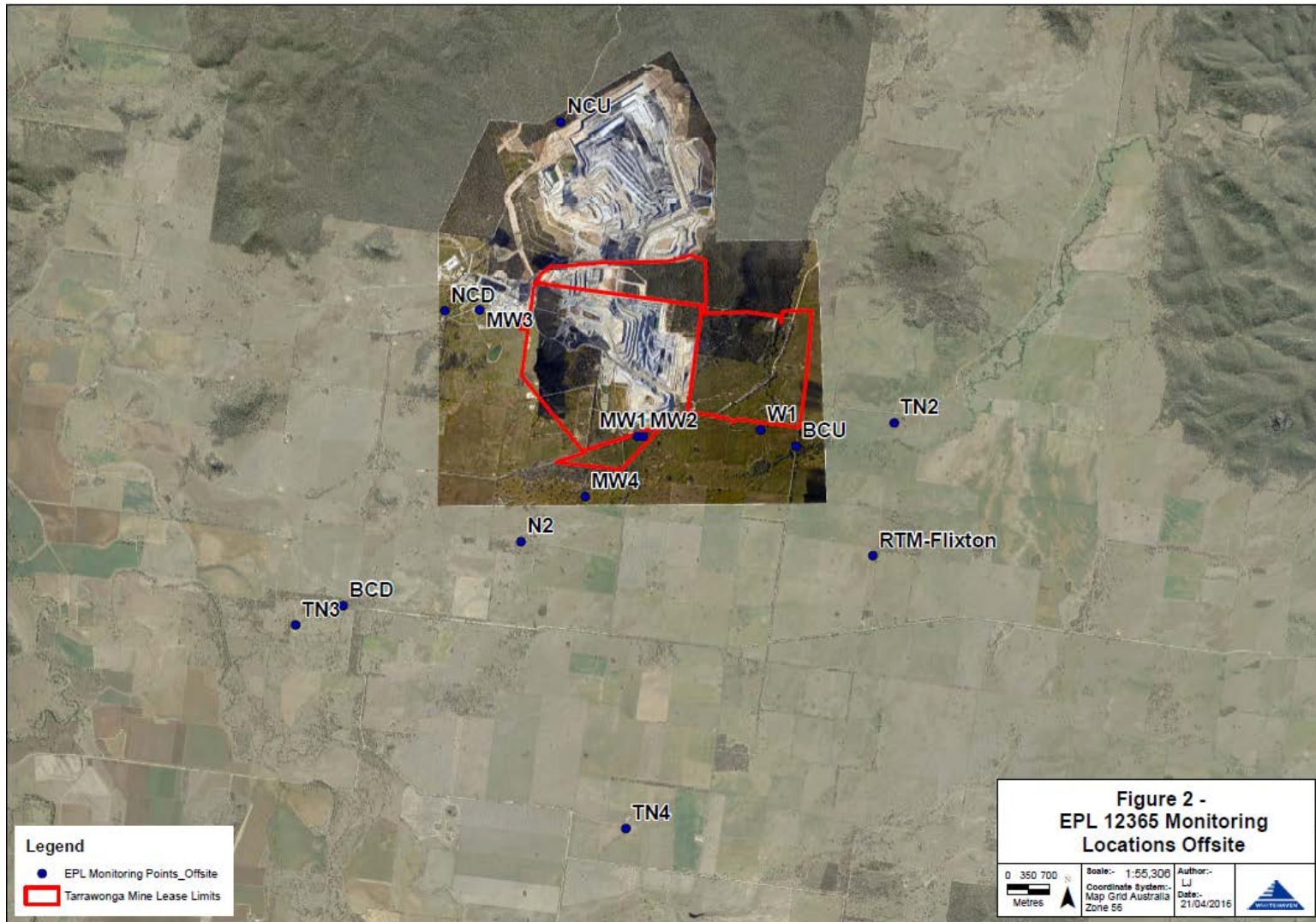
Table 7 – Monitoring (Blasts – Limits Apply)

Location	Parameter	Units of Measure	Frequency	No. of Blasts for the Month	Average Value	Max Value	100%ile Limit	(Potential) Non-compliance /breach	Date Obtained
Tarrawonga	Blast Noise	dB (Lin Peak)	Every Blast	6	95.1	109.7	120	Nil	29/7/2017
	Blast Vibration	mm/s	Every Blast	6	0.14	0.33	10	Nil	29/7/2017

Figure 1 – EPL 12365 Onsite Monitoring Locations



Figure 2 – EPL 12365 Offsite Monitoring Locations





TARRAWONGA COAL MINE – MONTHLY MONITORING SUMMARY

Site Information

EPL No: 12365

EPA Website Link: <http://www.epa.nsw.gov.au/prpoeoapp/ViewPOEOLicence.aspx?DOCID=55113&SYSUID=1&LICID=12365>

Licensee: Tarrawonga Coal Pty Ltd

Licensee Address: Tarrawonga Coal Mine, 469 Goonbri Road, BOGGABRI NSW 2382

EPL Monitoring Points: See Figure 1 and 2 below

Sampling Period: August 2017

Obtained Date: 25 August 2017

Publication Date: 6 September 2017

Table 1 - No Pollutant Limits Apply

EPL ID	Pollutant	Units of Measure	Monitoring Frequency	No. of Samples for the Month	Date Sampled	Date Obtained	Min Value	Mean Value	Median Value	Max or Only Value
5	TSS	mg/L	Upon discharge	0	-	-	-	-	-	-
	Conductivity	ms/cm		0	-	-	-	-	-	-
	Oil & Grease	mg/L		0	-	-	-	-	-	-
	pH	pH		0	-	-	-	-	-	-
6	TSS	mg/L	Upon discharge	0	-	-	-	-	-	-
	Conductivity	ms/cm		0	-	-	-	-	-	-
	Oil & Grease	mg/L		0	-	-	-	-	-	-
	pH	pH		0	-	-	-	-	-	-
7	TSS	mg/L	Upon discharge	0	-	-	-	-	-	-
	Conductivity	ms/cm		0	-	-	-	-	-	-
	Oil & Grease	mg/L		0	-	-	-	-	-	-
	pH	pH		0	-	-	-	-	-	-
8	TSS	mg/L	Upon discharge	0	-	-	-	-	-	-
	Conductivity	ms/cm		0	-	-	-	-	-	-
	Oil & Grease	mg/L		0	-	-	-	-	-	-



EPL ID	Pollutant	Units of Measure	Monitoring Frequency	No. of Samples for the Month	Date Sampled	Date Obtained	Min Value	Mean Value	Median Value	Max or Only Value
	pH	pH		0	-	-	-	-	-	-

Table 2 - Pollutant Limits Apply

EPL ID	Pollutant	Units of Measure	Monitoring Frequency	No. of Samples for the Month	Date Sampled	Date Obtained	Min Value	Max or Only Value	100%ile Limit	Exceedance (Yes/No)	Comments
1	TSS	mg/L	Upon discharge	0	-	-	-	-		-	-
	Oil & Grease	mg/L		0	-	-	-	-		-	-
	pH	pH		0	-	-	-	-		-	-
2	TSS	mg/L	Upon discharge	0	-	-	-	-		-	-
	Oil & Grease	mg/L		0	-	-	-	-		-	-
	pH	pH		0	-	-	-	-		-	-
3	TSS	mg/L	Upon discharge	0	-	-	-	-		-	-
	Oil & Grease	mg/L		0	-	-	-	-		-	-
	pH	pH		0	-	-	-	-		-	-
24	TSS	mg/L	Upon discharge	0	-	-	-	-		-	-
	Oil & Grease	mg/L		0	-	-	-	-		-	-
	pH	pH		0	-	-	-	-		-	-
25	TSS	mg/L	Upon discharge	0	-	-	-	-		-	-
	Oil & Grease	mg/L		0	-	-	-	-		-	-
	pH	pH		0	-	-	-	-		-	-
26	TSS	mg/L	Upon discharge	0	-	-	-	-		-	-
	Oil & Grease	mg/L		0	-	-	-	-		-	-
	pH	pH		0	-	-	-	-		-	-
27	TSS	mg/L	Upon discharge	0	-	-	-	-		-	-
	Oil & Grease	mg/L		0	-	-	-	-		-	-
	pH	pH		0	-	-	-	-		-	-



Table 3 – Monitoring (Quarterly & 6 Monthly – No Limits apply)

EPL ID	Pollutant	Units of Measure	Monitoring Frequency	No. of Samples for the Period	Date Sampled	Date Obtained	Min Value	Mean Value	Median Value	Max or Only Value
9	Conductivity	ms/cm	6 monthly	0	-	-	-	-		
	Lead	mg/L		0	-	-	-	-		
	pH	pH		0	-	-	-	-		
	Standing Water Level	metres		0	-	-	-	-		
10	Conductivity	ms/cm	6 monthly	0	-	-	-	-		
	Lead	mg/L		0	-	-	-	-		
	pH	pH		0	-	-	-	-		
	Standing Water Level	metres		0	-	-	-	-		
11	Conductivity	ms/cm	6 monthly	0	-	-	-	-		
	Lead	mg/L		0	-	-	-	-		
	pH	pH		0	-	-	-	-		
	Standing Water Level	metres		0	-	-	-	-		
12	Conductivity	ms/cm	6 monthly	0	-	-	-	-		
	Lead	mg/L		0	-	-	-	-		
	pH	pH		0	-	-	-	-		
	Standing Water Level	metres		0	-	-	-	-		
13	Conductivity	ms/cm	Quarterly	0	-	-	-	-		
	Oil & Grease	mg/L		0	-	-	-	-		
	pH	pH		0	-	-	-	-		
	TSS	mg/L		0	-	-	-	-		



Table 4 – Monitoring (Noise – Limits Apply)

EPL ID	Date	Start Time	Measurement period	Measured Levels – dB(A) Leq 15min Day	Measured Levels – dB(A) Leq 15min Evening	Measured Levels – dB(A) Leq 15min Night	Measured Levels – dB(A) LA1 (1 min) Night	Limit	Wind Speed (m/s)	Stability Class	Compliant (Yes/No)	Date Obtained
TN2	-	-	-	-				-	-	-	-	No Sampling
	-	-	-		-			-	-	-	-	
	-	-	-			-		-	-	-	-	
	-	-	-				-	-	-	-	-	



Table 5 – Monitoring (Noise – Limits Apply)

EPL ID	Date	Start Time	Measurement period	Measured Levels – dB(A) Leq 15min Day	Measured Levels – dB(A) Leq 15min Evening	Measured Levels – dB(A) Leq 15min Night	Measured Levels – dB(A) LA1 (1 min) Night	Limit	Wind Speed (m/s)	Stability Class	Compliant (Yes/No)	Date Obtained
TN3	-	-	-	-				-	-	-	-	No Sampling
	-	-	-		-			-	-	-	-	
	-	-	-			-		-	-	-	-	
	-	-	-				-	-	-	-	-	



Table 6 – Monitoring (Noise – Limits Apply)

EPL ID	Date	Start Time	Measurement period	Measured Levels – dB(A) L _{eq} 15min Day	Measured Levels – dB(A) L _{eq} 15min Evening	Measured Levels – dB(A) L _{eq} 15min Night	Measured Levels – dB(A) L _{A1} (1 min) Night	Limit	Wind Speed (m/s)	Stability Class	Compliant (Yes/No)	Date Obtained
TN4	-	-	-	-				-	-	-	-	No Sampling
	-	-	-		-			-	-	-	-	
	-	-	-			-		-	-	-	-	
	-	-	-				-	-	-	-	-	



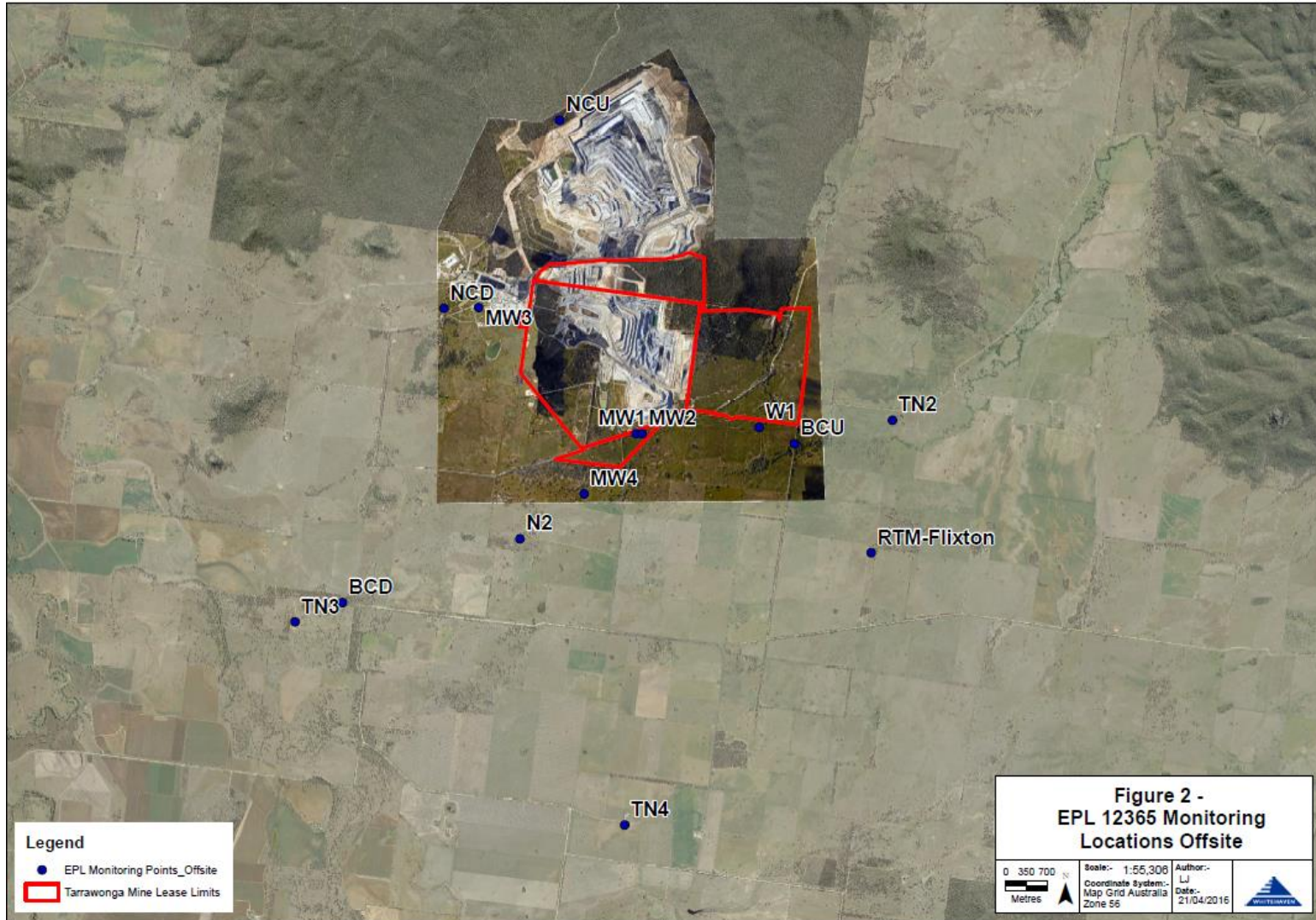
Table 7 – Monitoring (Blasts – Limits Apply)

Location	Parameter	Units of Measure	Frequency	No. of Blasts for the Month	Average Value	Max Value	100%ile Limit	(Potential) Non-compliance /breach	Date Obtained
Tarrawonga	Blast Noise	dB (Lin Peak)	Every Blast	6	102.8	111.3	120	Nil	25/8/2017
	Blast Vibration	mm/s	Every Blast	6	0.39	0.51	10	Nil	25/8/2017

Figure 1 – EPL 12365 Onsite Monitoring Locations



Figure 2 – EPL 12365 Offsite Monitoring Locations





TARRAWONGA COAL MINE – MONTHLY MONITORING SUMMARY

Site Information

EPL No: 12365

EPA Website Link: <http://www.epa.nsw.gov.au/prpoeoapp/ViewPOEOLicence.aspx?DOCID=55113&SYSUID=1&LICID=12365>

Licensee: Tarrawonga Coal Pty Ltd

Licensee Address: Tarrawonga Coal Mine, 469 Goonbri Road, BOGGABRI NSW 2382

EPL Monitoring Points: See Figure 1 and 2 below

Sampling Period: September 2017

Obtained Date: 27 September 2017

Publication Date: 10 October 2017

Table 1 - No Pollutant Limits Apply

EPL ID	Pollutant	Units of Measure	Monitoring Frequency	No. of Samples for the Month	Date Sampled	Date Obtained	Min Value	Mean Value	Median Value	Max or Only Value
5	TSS	mg/L	Upon discharge	0	-	-	-	-	-	-
	Conductivity	ms/cm		0	-	-	-	-	-	-
	Oil & Grease	mg/L		0	-	-	-	-	-	-
	pH	pH		0	-	-	-	-	-	-
6	TSS	mg/L	Upon discharge	0	-	-	-	-	-	-
	Conductivity	ms/cm		0	-	-	-	-	-	-
	Oil & Grease	mg/L		0	-	-	-	-	-	-
	pH	pH		0	-	-	-	-	-	-
7	TSS	mg/L	Upon discharge	0	-	-	-	-	-	-
	Conductivity	ms/cm		0	-	-	-	-	-	-
	Oil & Grease	mg/L		0	-	-	-	-	-	-
	pH	pH		0	-	-	-	-	-	-
8	TSS	mg/L	Upon discharge	0	-	-	-	-	-	-
	Conductivity	ms/cm		0	-	-	-	-	-	-
	Oil & Grease	mg/L		0	-	-	-	-	-	-



EPL ID	Pollutant	Units of Measure	Monitoring Frequency	No. of Samples for the Month	Date Sampled	Date Obtained	Min Value	Mean Value	Median Value	Max or Only Value
	pH	pH		0	-	-	-	-	-	-

Table 2 - Pollutant Limits Apply

EPL ID	Pollutant	Units of Measure	Monitoring Frequency	No. of Samples for the Month	Date Sampled	Date Obtained	Min Value	Max or Only Value	100%ile Limit	Exceedance (Yes/No)	Comments
1	TSS	mg/L	Upon discharge	0	-	-	-	-		-	-
	Oil & Grease	mg/L		0	-	-	-	-		-	-
	pH	pH		0	-	-	-	-		-	-
2	TSS	mg/L	Upon discharge	0	-	-	-	-		-	-
	Oil & Grease	mg/L		0	-	-	-	-		-	-
	pH	pH		0	-	-	-	-		-	-
3	TSS	mg/L	Upon discharge	0	-	-	-	-		-	-
	Oil & Grease	mg/L		0	-	-	-	-		-	-
	pH	pH		0	-	-	-	-		-	-
24	TSS	mg/L	Upon discharge	0	-	-	-	-		-	-
	Oil & Grease	mg/L		0	-	-	-	-		-	-
	pH	pH		0	-	-	-	-		-	-
25	TSS	mg/L	Upon discharge	0	-	-	-	-		-	-
	Oil & Grease	mg/L		0	-	-	-	-		-	-
	pH	pH		0	-	-	-	-		-	-
26	TSS	mg/L	Upon discharge	0	-	-	-	-		-	-
	Oil & Grease	mg/L		0	-	-	-	-		-	-
	pH	pH		0	-	-	-	-		-	-
27	TSS	mg/L	Upon discharge	0	-	-	-	-		-	-
	Oil & Grease	mg/L		0	-	-	-	-		-	-
	pH	pH		0	-	-	-	-		-	-



Table 3 – Monitoring (Quarterly & 6 Monthly – No Limits apply)

EPL ID	Pollutant	Units of Measure	Monitoring Frequency	No. of Samples for the Period	Date Sampled	Date Obtained	Min Value	Mean Value	Median Value	Max or Only Value
9	Conductivity	ms/cm	6 monthly	1	13/9/2017	20/9/2017	-	-		3370
	Lead	mg/L		1	13/9/2017	20/9/2017	-	-		0.002
	pH	pH		1	13/9/2017	20/9/2017	-	-		8.31
	Standing Water Level	metres		1	13/9/2017	20/9/2017	-	-		6.8
10	Conductivity	ms/cm	6 monthly	1	13/9/2017	20/9/2017	-	-		533
	Lead	mg/L		1	13/9/2017	20/9/2017	-	-		<0.001
	pH	pH		1	13/9/2017	20/9/2017	-	-		7.54
	Standing Water Level	metres		1	13/9/2017	20/9/2017	-	-		3.64
11	Conductivity	ms/cm	6 monthly	0	-	-	-	-		
	Lead	mg/L		0	-	-	-	-		
	pH	pH		0	-	-	-	-		
	Standing Water Level	metres		0	-	-	-	-		
12	Conductivity	ms/cm	6 monthly	1	13/9/2017	20/9/2017	-	-		4570
	Lead	mg/L		1	13/9/2017	20/9/2017	-	-		0.009
	pH	pH		1	13/9/2017	20/9/2017	-	-		7.82
	Standing Water Level	metres		1	13/9/2017	20/9/2017	-	-		8.9
13	Conductivity	ms/cm	Quarterly	1	5/9/2017	12/9/2017	-	-		3050
	Oil & Grease	mg/L		1	5/9/2017	12/9/2017	-	-		<5
	pH	pH		1	5/9/2017	12/9/2017	-	-		8.78
	TSS	mg/L		1	5/9/2017	12/9/2017	-	-		21



Table 4 – Monitoring (Noise – Limits Apply)

EPL ID	Date	Start Time	Measurement period	Measured Levels – dB(A) Leq 15min Day	Measured Levels – dB(A) Leq 15min Evening	Measured Levels – dB(A) Leq 15min Night	Measured Levels – dB(A) LA1 (1 min) Night	Limit	Wind Speed (m/s)	Stability Class	Compliant (Yes/No)	Date Obtained
TN2	4/9/2017	16:07	90	<35				35	5	B	Yes	18/9/2017
	4/9/2017	21:37	30		33			35	2.8	D	Yes	
	4/9/2017	22:46	60			34		35	2.3	E	Yes	
	4/9/2017	22:46	60				44	45	2.3	E	Yes	
	5/9/2017	11:32	90	32				35	4.4	C	Yes	
	5/9/2017	18:37	30		38*			35	2.3	D	Yes	
	5/9/2017	22:22	60			35		35	1.4	E	Yes	
	5/9/2017	23:11	60				46*	45	1.5	D	Yes	
	6/9/2017	10:38	90	<30				35	5.3	C	Yes	
	6/9/2017	18:08	30		36*			35	2.7	D	Yes	
	6/9/2017	22:00	60			37*		35	1.4	E	Yes	
	6/9/2017	22:00	60				45	45	1.4	E	Yes	
	7/9/2017	16:07	90	28				35	3.2	A	Yes	
	7/9/2017	18:39	30		39			35	1.6	D	Yes	
	7/9/2017	22:00	60			36*		35	0.5	F	Yes	
7/9/2017	22:45	60				44	45	1.6	E	Yes		

- Result measured on project owned land.



Table 5 – Monitoring (Noise – Limits Apply)

EPL ID	Date	Start Time	Measurement period	Measured Levels – dB(A) Leq 15min Day	Measured Levels – dB(A) Leq 15min Evening	Measured Levels – dB(A) Leq 15min Night	Measured Levels – dB(A) LA1 (1 min) Night	Limit	Wind Speed (m/s)	Stability Class	Compliant (Yes/No)	Date Obtained
TN3	4/9/2017	17:30	90	IA				35	3.4	D	Yes	18/9/2017
	4/9/2017	21:15	30		IA			35	3.0	D	Yes	
	4/9/2017	22:31	60			<20		35	2.4	D	Yes	
	4/9/2017	22:31	60				<20	45	2.4	D	Yes	
	5/9/2017	11:35	90	IA				35	4.4	C	Yes	
	5/9/2017	18:42	30		IA			35	2.3	D	Yes	
	5/9/2017	23:28	60			IA		35	1.4	F	Yes	
	5/9/2017	23:28	60				IA	45	1.4	F	Yes	
	6/9/2017	11:34	90	IA				35	4.3	B	Yes	
	6/9/2017	18:15	30		IA			35	2.3	E	Yes	
	6/9/2017	23:33	60			IA		35	1.5	D	Yes	
	6/9/2017	23:33	60				IA	45	1.5	D	Yes	
	7/9/2017	11:56	90	<30				35	3.3	A	Yes	
	7/9/2017	19:00	30		IA			35	1.3	E	Yes	
	7/9/2017	22:31	60			IA		35	1.6	E	Yes	
7/9/2017	22:31	60				IA	45	1.6	E	Yes		



Table 6 – Monitoring (Noise – Limits Apply)

EPL ID	Date	Start Time	Measurement period	Measured Levels – dB(A) Leq 15min Day	Measured Levels – dB(A) Leq 15min Evening	Measured Levels – dB(A) Leq 15min Night	Measured Levels – dB(A) LA1 (1 min) Night	Limit	Wind Speed (m/s)	Stability Class	Compliant (Yes/No)	Date Obtained
TN4	4/9/2017	14:27	90	IA				35	5.1	B	Yes	18/9/2017
	4/9/2017	20:33	30		<20			35	1.8	F	Yes	
	4/9/2017	23:13	60			<20		35	3.8	D	Yes	
	5/9/2017	00:02	60				25	45	3.3	D	Yes	
	5/9/2017	09:46	90	IA				35	2.4	A	Yes	
	5/9/2017	18:00	30		IA			35	2.6	D	Yes	
	5/9/2017	22:15	60			IA		35	1.4	E	Yes	
	5/9/2017	22:15	60				IA	45	1.4	E	Yes	
	6/9/2017	10:38	90	IA				35	5.3	C	Yes	
	6/9/2017	18:57	30		IA			35	1.8	E	Yes	
	6/9/2017	23:57	60			IA		35	1.0	D	Yes	
	6/9/2017	23:57	60				IA	45	1.0	D	Yes	
	7/9/2017	09:33	90	IA				35	2.4	A	Yes	
	7/9/2017	18:04	30		IA			35	2.7	E	Yes	
	8/9/2017	00:08	60			IA		35	1.3	D	Yes	
7/9/2017	00:08	60				IA	45	1.3	D	Yes		



Table 7 – Monitoring (Blasts – Limits Apply)

Location	Parameter	Units of Measure	Frequency	No. of Blasts for the Month	Average Value	Max Value	100%ile Limit	(Potential) Non-compliance /breach	Date Obtained
Tarrawonga	Blast Noise	dB (Lin Peak)	Every Blast	5	100.4	111.2	120	Nil	27/9/2017
	Blast Vibration	mm/s	Every Blast	5	0.38	0.85	10	Nil	27/9/2017

Figure 1 – EPL 12365 Onsite Monitoring Locations

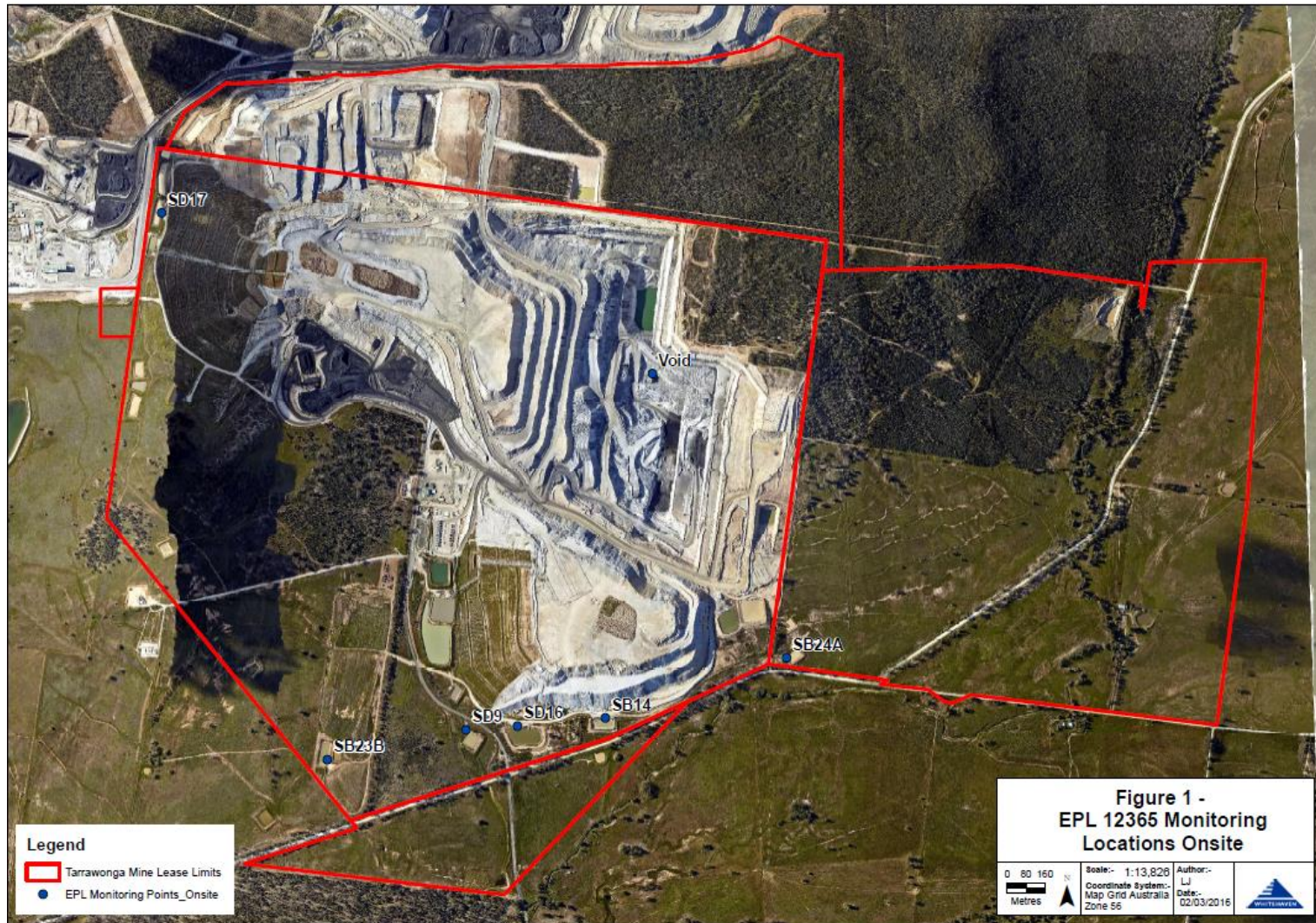
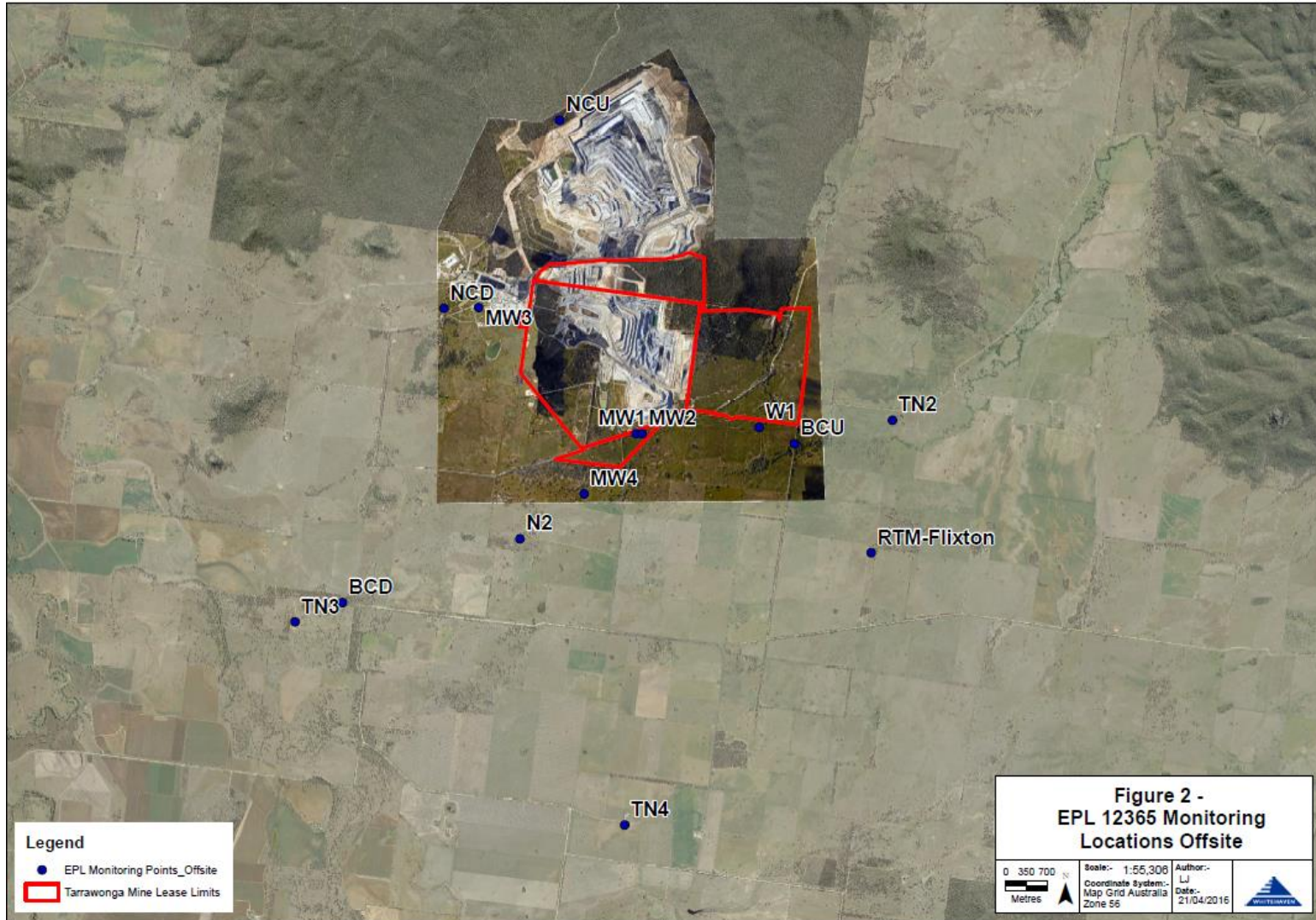


Figure 2 – EPL 12365 Offsite Monitoring Locations





WHITEHAVEN COAL

TARRAWONGA COAL MINE – MONTHLY MONITORING SUMMARY

Site Information

EPL No: 12365

EPA Website Link: <http://www.epa.nsw.gov.au/prpoeoapp/ViewPOEOLicence.aspx?DOCID=55113&SYSUID=1&LICID=12365>

Licensee: Tarrawonga Coal Pty Ltd

Licensee Address: Tarrawonga Coal Mine, 469 Goonbri Road, BOGGABRI NSW 2382

EPL Monitoring Points: See Figure 1 and 2 below

Sampling Period: October 2017

Obtained Date: 31 October 2017

Publication Date: 1 November 2017

Table 1 - No Pollutant Limits Apply

EPL ID	Pollutant	Units of Measure	Monitoring Frequency	No. of Samples for the Month	Date Sampled	Date Obtained	Min Value	Mean Value	Median Value	Max or Only Value
5	TSS	mg/L	Upon discharge	0	-	-	-	-	-	-
	Conductivity	ms/cm		0	-	-	-	-	-	-
	Oil & Grease	mg/L		0	-	-	-	-	-	-
	pH	pH		0	-	-	-	-	-	-
6	TSS	mg/L	Upon discharge	0	-	-	-	-	-	-
	Conductivity	ms/cm		0	-	-	-	-	-	-
	Oil & Grease	mg/L		0	-	-	-	-	-	-
	pH	pH		0	-	-	-	-	-	-
7	TSS	mg/L	Upon discharge	0	-	-	-	-	-	-
	Conductivity	ms/cm		0	-	-	-	-	-	-
	Oil & Grease	mg/L		0	-	-	-	-	-	-
	pH	pH		0	-	-	-	-	-	-
8	TSS	mg/L	Upon discharge	0	-	-	-	-	-	-
	Conductivity	ms/cm		0	-	-	-	-	-	-
	Oil & Grease	mg/L		0	-	-	-	-	-	-
	pH	pH		0	-	-	-	-	-	-



WHITEHAVEN COAL

Table 2 - Pollutant Limits Apply

EPL ID	Pollutant	Units of Measure	Monitoring Frequency	No. of Samples for the Month	Date Sampled	Date Obtained	Min Value	Max or Only Value	100%ile Limit	Exceedance (Yes/No)	Comments
1	TSS	mg/L	Upon discharge	0	-	-	-	-		-	-
	Oil & Grease	mg/L		0	-	-	-	-		-	-
	pH	pH		0	-	-	-	-		-	-
2	TSS	mg/L	Upon discharge	0	-	-	-	-		-	-
	Oil & Grease	mg/L		0	-	-	-	-		-	-
	pH	pH		0	-	-	-	-		-	-
3	TSS	mg/L	Upon discharge	0	-	-	-	-		-	-
	Oil & Grease	mg/L		0	-	-	-	-		-	-
	pH	pH		0	-	-	-	-		-	-
24	TSS	mg/L	Upon discharge	0	-	-	-	-		-	-
	Oil & Grease	mg/L		0	-	-	-	-		-	-
	pH	pH		0	-	-	-	-		-	-
25	TSS	mg/L	Upon discharge	0	-	-	-	-		-	-
	Oil & Grease	mg/L		0	-	-	-	-		-	-
	pH	pH		0	-	-	-	-		-	-
26	TSS	mg/L	Upon discharge	0	-	-	-	-		-	-
	Oil & Grease	mg/L		0	-	-	-	-		-	-
	pH	pH		0	-	-	-	-		-	-
27	TSS	mg/L	Upon discharge	0	-	-	-	-		-	-
	Oil & Grease	mg/L		0	-	-	-	-		-	-
	pH	pH		0	-	-	-	-		-	-



Table 3 – Monitoring (Quarterly & 6 Monthly – No Limits apply)

EPL ID	Pollutant	Units of Measure	Monitoring Frequency	No. of Samples for the Period	Date Sampled	Date Obtained	Min Value	Mean Value	Median Value	Max or Only Value
9	Conductivity	ms/cm	6 monthly	0	-	-	-	-		
	Lead	mg/L		0	-	-	-	-		
	pH	pH		0	-	-	-	-		
	Standing Water Level	metres		0	-	-	-	-		
10	Conductivity	ms/cm	6 monthly	0	-	-	-	-		
	Lead	mg/L		0	-	-	-	-		
	pH	pH		0	-	-	-	-		
	Standing Water Level	metres		0	-	-	-	-		
11	Conductivity	ms/cm	6 monthly	0	-	-	-	-		
	Lead	mg/L		0	-	-	-	-		
	pH	pH		0	-	-	-	-		
	Standing Water Level	metres		0	-	-	-	-		
12	Conductivity	ms/cm	6 monthly	0	-	-	-	-		
	Lead	mg/L		0	-	-	-	-		
	pH	pH		0	-	-	-	-		
	Standing Water Level	metres		0	-	-	-	-		
13	Conductivity	ms/cm	Quarterly	0	-	-	-	-		
	Oil & Grease	mg/L		0	-	-	-	-		
	pH	pH		0	-	-	-	-		
	TSS	mg/L		0	-	-	-	-		



Table 4 – Monitoring (Noise – Limits Apply)

EPL ID	Date	Start Time	Measurement period	Measured Levels – dB(A) Leq 15min Day	Measured Levels – dB(A) Leq 15min Evening	Measured Levels – dB(A) Leq 15min Night	Measured Levels – dB(A) LA1 (1 min) Night	Limit	Wind Speed (m/s)	Stability Class	Compliant (Yes/No)	Date Obtained
TN2	-	-	-	-				-	-	-	-	No Sampling
	-	-	-		-			-	-	-	-	
	-	-	-			-		-	-	-	-	
	-	-	-				-	-	-	-	-	



Table 5 – Monitoring (Noise – Limits Apply)

EPL ID	Date	Start Time	Measurement period	Measured Levels – dB(A) Leq 15min Day	Measured Levels – dB(A) Leq 15min Evening	Measured Levels – dB(A) Leq 15min Night	Measured Levels – dB(A) LA1 (1 min) Night	Limit	Wind Speed (m/s)	Stability Class	Compliant (Yes/No)	Date Obtained
TN3	-	-	-	-				-	-	-	-	No Sampling
	-	-	-		-			-	-	-	-	
	-	-	-			-		-	-	-	-	
	-	-	-				-	-	-	-	-	



WHITEHAVEN COAL

Table 6 – Monitoring (Noise – Limits Apply)

EPL ID	Date	Start Time	Measurement period	Measured Levels – dB(A) Leq 15min Day	Measured Levels – dB(A) Leq 15min Evening	Measured Levels – dB(A) Leq 15min Night	Measured Levels – dB(A) LA1 (1 min) Night	Limit	Wind Speed (m/s)	Stability Class	Compliant (Yes/No)	Date Obtained
TN4	-	-	-	-	-	-	-	-	-	-	-	No Sampling
	-	-	-	-	-	-	-	-	-	-	-	
	-	-	-	-	-	-	-	-	-	-	-	
	-	-	-	-	-	-	-	-	-	-	-	



Table 7 – Monitoring (Blasts – Limits Apply)

Location	Parameter	Units of Measure	Frequency	No. of Blasts for the Month	Average Value	Max Value	100%ile Limit	(Potential) Non-compliance /breach	Date Obtained
Tarrawonga	Blast Noise	dB (Lin Peak)	Every Blast	9	94.6	104.0	120	Nil	31/10/2017
	Blast Vibration	mm/s	Every Blast	9	0.22	0.74	10	Nil	31/10/2017

Figure 1 – EPL 12365 Onsite Monitoring Locations

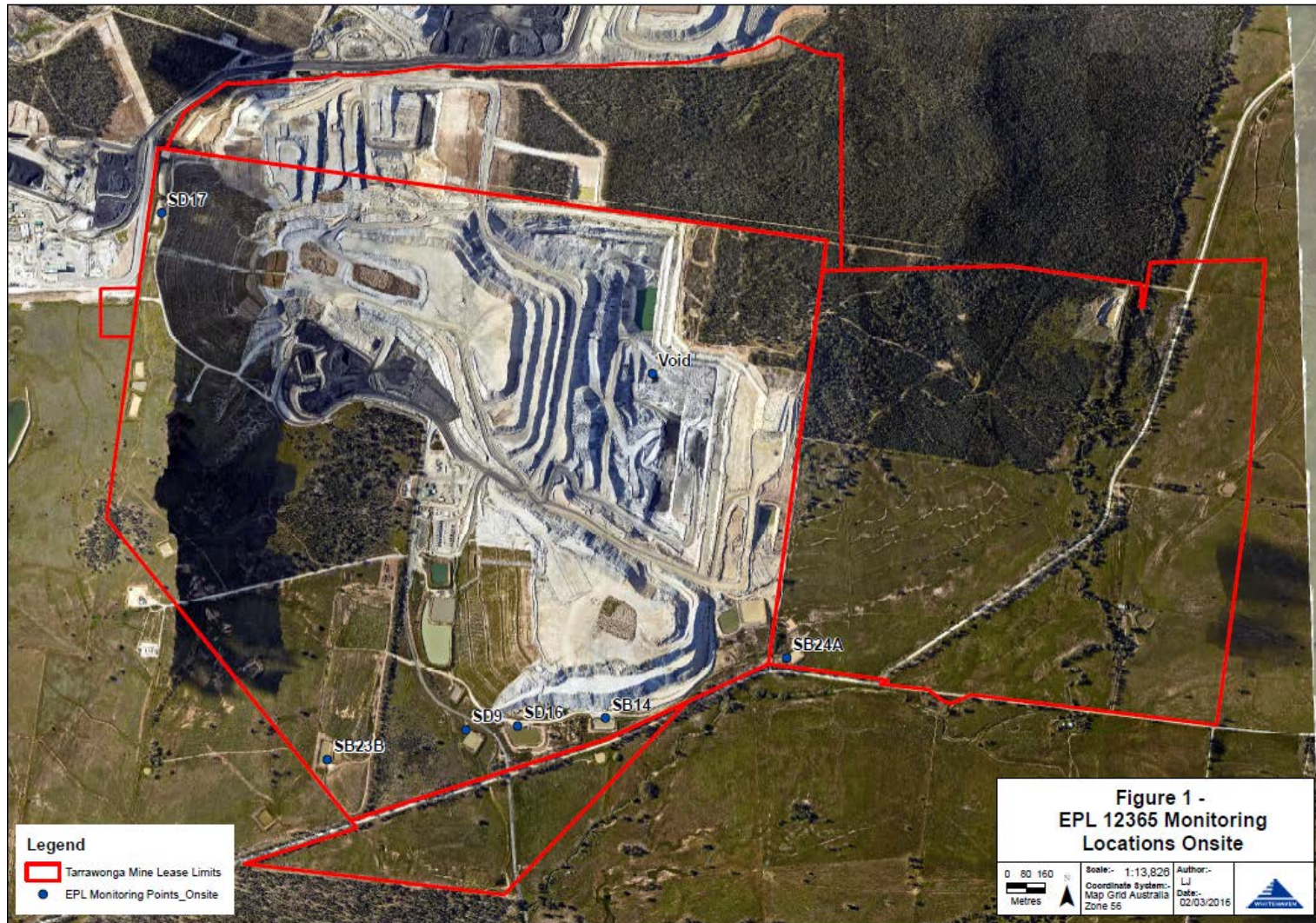
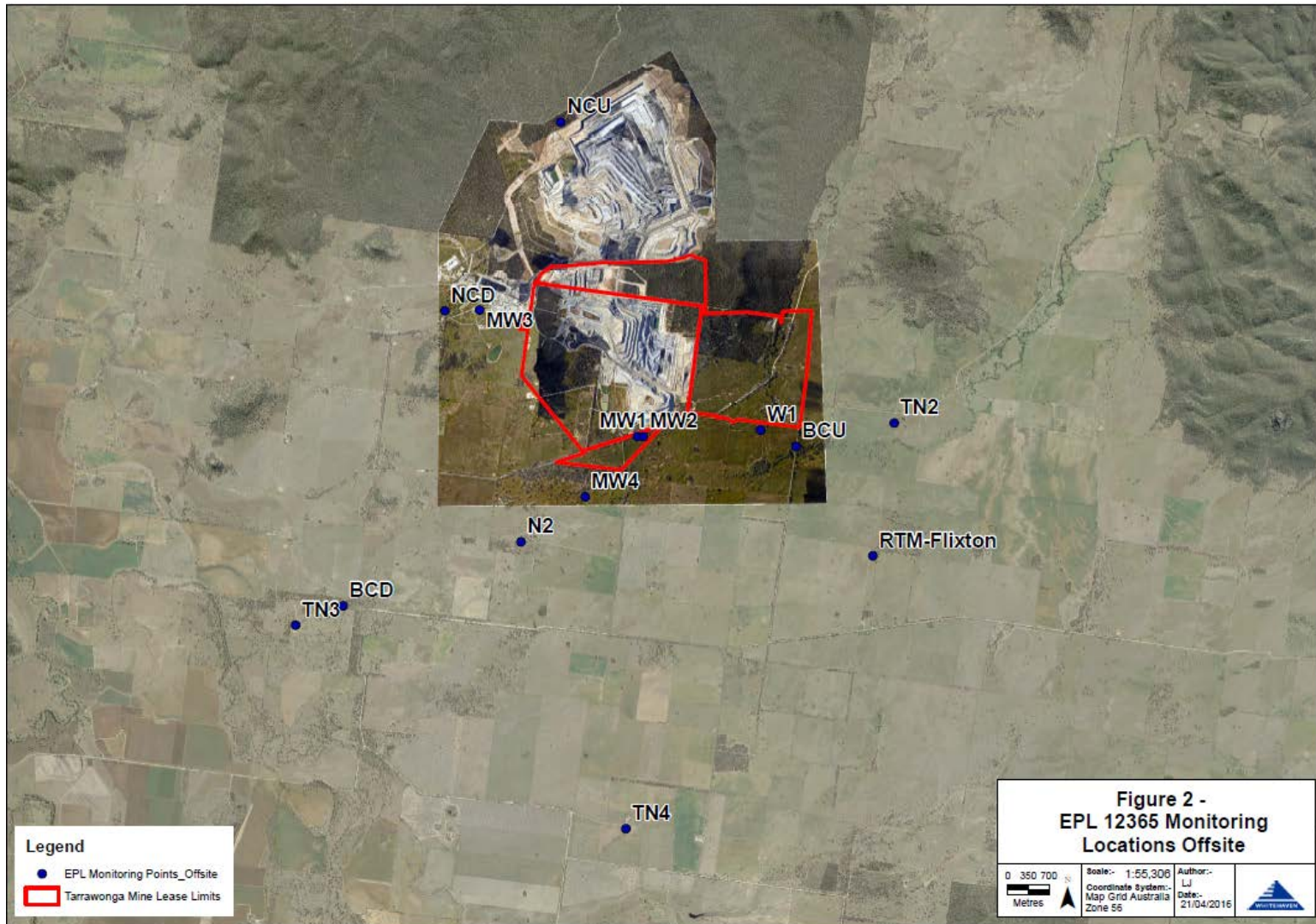


Figure 2 – EPL 12365 Offsite Monitoring Locations





TARRAWONGA COAL MINE – MONTHLY MONITORING SUMMARY

Site Information

EPL No: 12365

EPA Website Link: <http://www.epa.nsw.gov.au/prpoeoapp/ViewPOEOLicence.aspx?DOCID=55113&SYSUID=1&LICID=12365>

Licensee: Tarrawonga Coal Pty Ltd

Licensee Address: Tarrawonga Coal Mine, 469 Goonbri Road, BOGGABRI NSW 2382

EPL Monitoring Points: See Figure 1 and 2 below

Sampling Period: November 2017

Obtained Date: 8 December 2017

Publication Date: 11 December 2017

Table 1 - No Pollutant Limits Apply

EPL ID	Pollutant	Units of Measure	Monitoring Frequency	No. of Samples for the Month	Date Sampled	Date Obtained	Min Value	Mean Value	Median Value	Max or Only Value
5	TSS	mg/L	Upon discharge	0	-	-	-	-	-	-
	Conductivity	ms/cm		0	-	-	-	-	-	-
	Oil & Grease	mg/L		0	-	-	-	-	-	-
	pH	pH		0	-	-	-	-	-	-
6	TSS	mg/L	Upon discharge	0	-	-	-	-	-	-
	Conductivity	ms/cm		0	-	-	-	-	-	-
	Oil & Grease	mg/L		0	-	-	-	-	-	-
	pH	pH		0	-	-	-	-	-	-
7	TSS	mg/L	Upon discharge	0	-	-	-	-	-	-
	Conductivity	ms/cm		0	-	-	-	-	-	-
	Oil & Grease	mg/L		0	-	-	-	-	-	-
	pH	pH		0	-	-	-	-	-	-
8	TSS	mg/L	Upon discharge	0	-	-	-	-	-	-
	Conductivity	ms/cm		0	-	-	-	-	-	-
	Oil & Grease	mg/L		0	-	-	-	-	-	-
	pH	pH		0	-	-	-	-	-	-



Table 2 - Pollutant Limits Apply

EPL ID	Pollutant	Units of Measure	Monitoring Frequency	No. of Samples for the Month	Date Sampled	Date Obtained	Min Value	Max or Only Value	100%ile Limit	Exceedance (Yes/No)	Comments
1	TSS	mg/L	Upon discharge	0	-	-	-	-		-	-
	Oil & Grease	mg/L		0	-	-	-	-		-	-
	pH	pH		0	-	-	-	-		-	-
2	TSS	mg/L	Upon discharge	0	-	-	-	-		-	-
	Oil & Grease	mg/L		0	-	-	-	-		-	-
	pH	pH		0	-	-	-	-		-	-
3	TSS	mg/L	Upon discharge	0	-	-	-	-		-	-
	Oil & Grease	mg/L		0	-	-	-	-		-	-
	pH	pH		0	-	-	-	-		-	-
24	TSS	mg/L	Upon discharge	0	-	-	-	-		-	-
	Oil & Grease	mg/L		0	-	-	-	-		-	-
	pH	pH		0	-	-	-	-		-	-
25	TSS	mg/L	Upon discharge	0	-	-	-	-		-	-
	Oil & Grease	mg/L		0	-	-	-	-		-	-
	pH	pH		0	-	-	-	-		-	-
26	TSS	mg/L	Upon discharge	0	-	-	-	-		-	-
	Oil & Grease	mg/L		0	-	-	-	-		-	-
	pH	pH		0	-	-	-	-		-	-
27	TSS	mg/L	Upon discharge	0	-	-	-	-		-	-
	Oil & Grease	mg/L		0	-	-	-	-		-	-
	pH	pH		0	-	-	-	-		-	-



Table 3 – Monitoring (Quarterly & 6 Monthly – No Limits apply)

EPL ID	Pollutant	Units of Measure	Monitoring Frequency	No. of Samples for the Period	Date Sampled	Date Obtained	Min Value	Mean Value	Median Value	Max or Only Value
9	Conductivity	ms/cm	6 monthly	0	-	-	-	-		
	Lead	mg/L		0	-	-	-	-		
	pH	pH		0	-	-	-	-		
	Standing Water Level	metres		0	-	-	-	-		
10	Conductivity	ms/cm	6 monthly	0	-	-	-	-		
	Lead	mg/L		0	-	-	-	-		
	pH	pH		0	-	-	-	-		
	Standing Water Level	metres		0	-	-	-	-		
11	Conductivity	ms/cm	6 monthly	0	-	-	-	-		
	Lead	mg/L		0	-	-	-	-		
	pH	pH		0	-	-	-	-		
	Standing Water Level	metres		0	-	-	-	-		
12	Conductivity	ms/cm	6 monthly	0	-	-	-	-		
	Lead	mg/L		0	-	-	-	-		
	pH	pH		0	-	-	-	-		
	Standing Water Level	metres		0	-	-	-	-		
13	Conductivity	µS/cm	Quarterly	1	13/11/17	1/12/17	-	-		2970
	Oil & Grease	mg/L		1	13/11/17	1/12/17	-	-		<5
	pH	pH		1	13/11/17	1/12/17	-	-		8.66
	TSS	mg/L		1	13/11/17	1/12/17	-	-		19



Table 4 – Monitoring (Noise – Limits Apply)

EPL ID	Date	Start Time	Measurement period	Measured Levels – dB(A) L _{eq} 15min Day	Measured Levels – dB(A) L _{eq} 15min Evening	Measured Levels – dB(A) L _{eq} 15min Night	Measured Levels – dB(A) L _{A1} (1 min) Night	Limit	Wind Speed (m/s)	Stability Class	Compliant (Yes/No)	Date Obtained
TN2	7/11/2017	11:33	90	30				35	3.0	A	Yes	8/12/2017
	6/11/2017	21:14	30		33			35	2.1	D	Yes	
	6/11/2017	22:30	60			36*		35	2.4	D	Yes	
	6/11/2017	22:30	60				44	45	2.4	D	Yes	
	8/11/2017	09:42	90	IA				35	5.6	C	Yes	
	7/11/2017	21:23	30		NM			35	0.6	F	Yes	
	7/11/2017	22:00	60			IA		35	2.2	F	Yes	
	7/11/2017	22:00	60				IA	45	2.2	F	Yes	
	9/11/2017	11:40	90	IA				35	4.0	A	Yes	
	8/11/2017	21:21	30		IA			35	4.9	D	Yes	
	8/11/2017	22:32	60			25		35	3.2	D	Yes	
	8/11/2017	22:48	60				30	45	3.8	E	Yes	
	10/11/2017	09:23	90	IA				35	2.4	B	Yes	
	9/11/2017	21:22	30		IA			35	3.8	D	Yes	
	9/11/2017	22:47	60			25		35	0.7	F	Yes	
9/11/2017	22:47	60				32	45	0.7	F	Yes		

* – Result measured on project owned land, IA – Inaudible, NM – Not Measurable



Table 5 – Monitoring (Noise – Limits Apply)

EPL ID	Date	Start Time	Measurement period	Measured Levels – dB(A) L _{eq} 15min Day	Measured Levels – dB(A) L _{eq} 15min Evening	Measured Levels – dB(A) L _{eq} 15min Night	Measured Levels – dB(A) L _{A1} (1 min) Night	Limit	Wind Speed (m/s)	Stability Class	Compliant (Yes/No)	Date Obtained
TN3	7/11/2017	12:55	90	IA				35	2.8	C	Yes	8/12/2017
	6/11/2017	21:27	30		IA			35	1.8	E	Yes	
	6/11/2017	22:01	60			IA		35	3.8	D	Yes	
	6/11/2017	22:01	60				IA	45	3.8	D	Yes	
	8/11/2017	11:51	90	IA				35	4.4	B	Yes	
	7/11/2017	21:15	30		20			35	0.8	D	Yes	
	7/11/2017	22:17	60			27		35	3.2	D	Yes	
	7/11/2017	22:35	60				32	45	2.6	F	Yes	
	9/11/2017	09:31	90	IA				35	4.0	B	Yes	
	8/11/2017	20:18	30		IA			35	4.0	D	Yes	
	8/11/2017	23:08	60			32		35	3.7	D	Yes	
	8/11/2017	23:40	60				37	45	3.2	D	Yes	
	10/11/2017	10:03	90	25				35	2.4	A	Yes	
	9/11/2017	21:06	30		25			35	4.1	D	Yes	
	9/11/2017	00:13	60			30		35	3.3	D	Yes	
9/11/2017	22:17	60				38	45	3.1	D	Yes		

IA – Inaudible, NM – Not Measurable



Table 6 – Monitoring (Noise – Limits Apply)

EPL ID	Date	Start Time	Measurement period	Measured Levels – dB(A) L _{eq} 15min Day	Measured Levels – dB(A) L _{eq} 15min Evening	Measured Levels – dB(A) L _{eq} 15min Night	Measured Levels – dB(A) L _{A1} (1 min) Night	Limit	Wind Speed (m/s)	Stability Class	Compliant (Yes/No)	Date Obtained
TN4	7/11/2017	11:30	90	IA				35	3.0	A	Yes	8/12/2017
	6/11/2017	20:43	30		IA			35	3.4	D	Yes	
	6/11/2017	23:22	60			IA		35	0.9	F	Yes	
	6/11/2017	23:22	60				IA	45	0.9	F	Yes	
	8/11/2017	10:01	90	IA				35	6.1	D	Yes	
	7/11/2017	20:31	30		IA			35	1.6	D	Yes	
	7/11/2017	23:34	60			27		35	2.5	E	Yes	
	7/11/2017	23:34	60				32	45	2.5	E	Yes	
	9/11/2017	09:52	90	IA				35	4.0	C	Yes	
	8/11/2017	21:00	30		IA			35	5.5	D	Yes	
	8/11/2017	00:07	60			30		35	1.8	E	Yes	
	8/11/2017	00:07	60				30	45	1.8	E	Yes	
	10/11/2017	08:49	90	30				35	3.1	B	Yes	
	9/11/2017	20:26	30		IA			35	3.3	D	Yes	
	9/11/2017	23:37	60			25		35	0.0	G	Yes	
	9/11/2017	23:52	60				30	45	1.1	F	Yes	
	10/11/2017	00:07	60			25		35	1.8	F	Yes	
10/11/2017	00:07	60				30	45	1.8	F	Yes		

IA – Inaudible, NM – Not Measurable



Table 7 – Monitoring (Blasts – Limits Apply)

Location	Parameter	Units of Measure	Frequency	No. of Blasts for the Month	Average Value	Max Value	100%ile Limit	(Potential) Non-compliance /breach	Date Obtained
Tarrawonga	Blast Noise	dB (Lin Peak)	Every Blast	6	98.5	108.4	120	Nil	28/11/2017
	Blast Vibration	mm/s	Every Blast	6	0.20	0.30	10	Nil	28/11/2017

Figure 1 – EPL 12365 Onsite Monitoring Locations

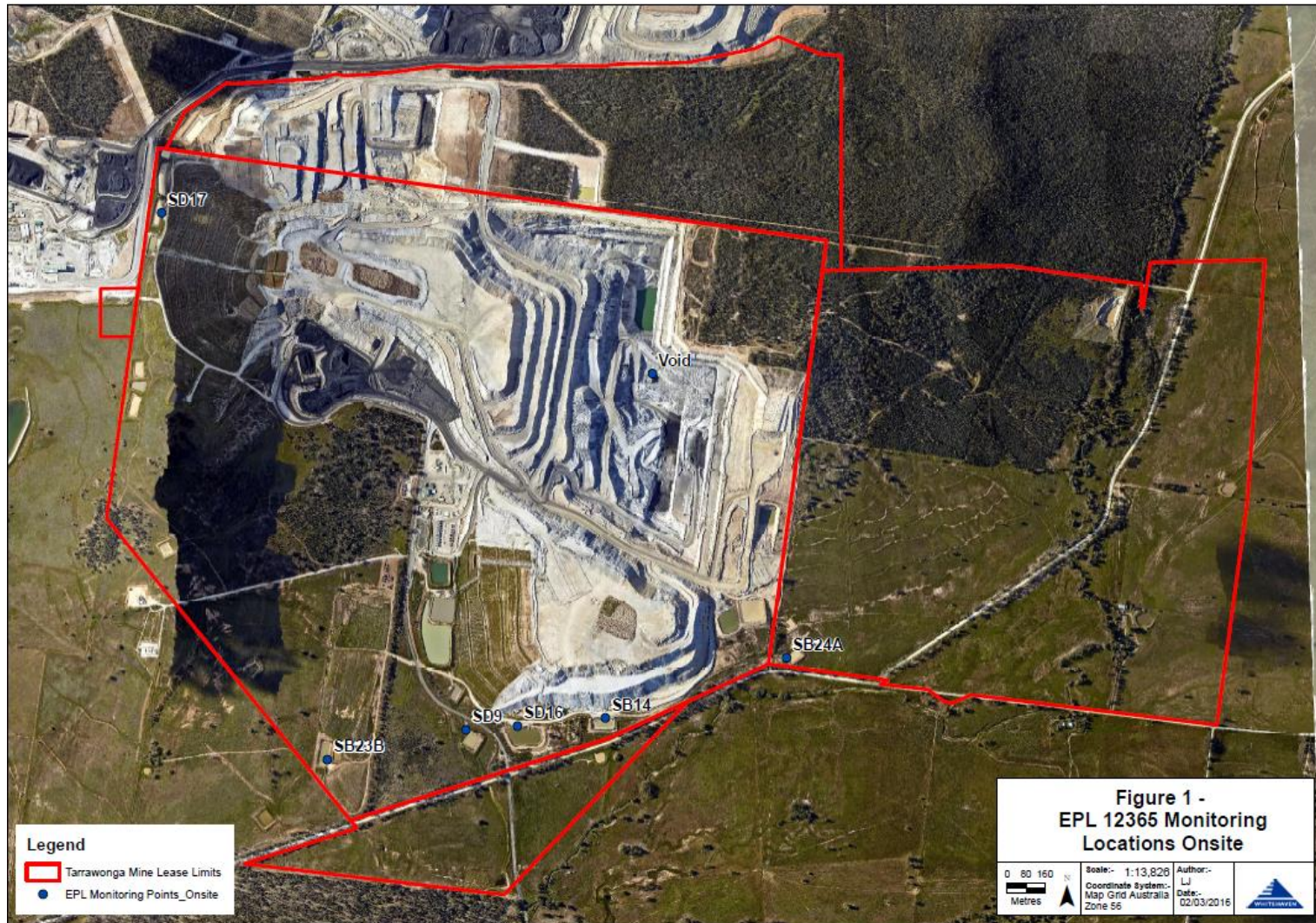
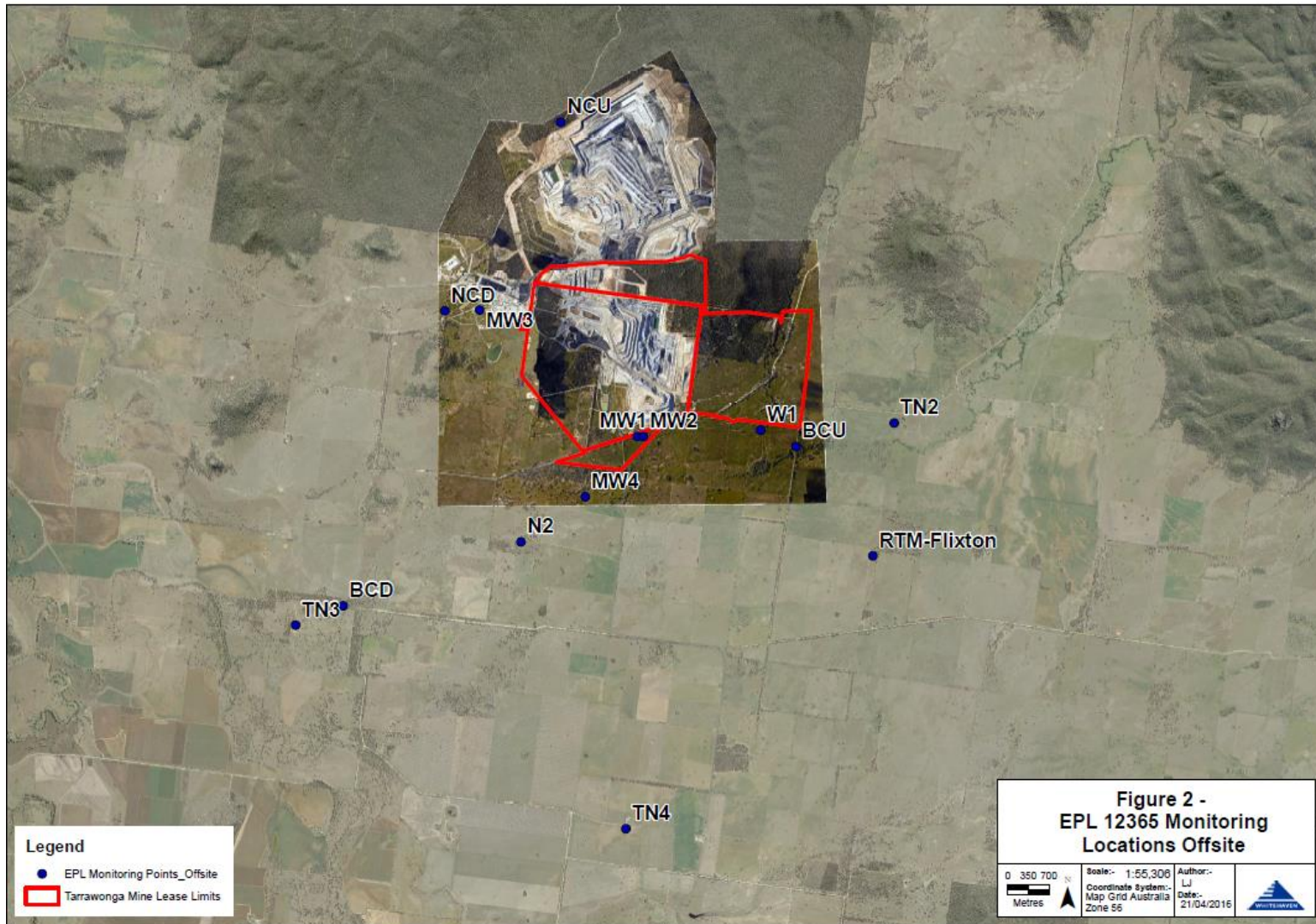


Figure 2 – EPL 12365 Offsite Monitoring Locations





TARRAWONGA COAL MINE – MONTHLY MONITORING SUMMARY

Site Information

EPL No: 12365

EPA Website Link: <http://www.epa.nsw.gov.au/prpoeoapp/ViewPOEOLicence.aspx?DOCID=55113&SYSUID=1&LICID=12365>

Licensee: Tarrawonga Coal Pty Ltd

Licensee Address: Tarrawonga Coal Mine, 469 Goonbri Road, BOGGABRI NSW 2382

EPL Monitoring Points: See Figure 1 and 2 below

Sampling Period: December 2017

Obtained Date: 28 December 2017

Publication Date: 3 January 2018

Table 1 - No Pollutant Limits Apply

EPL ID	Pollutant	Units of Measure	Monitoring Frequency	No. of Samples for the Month	Date Sampled	Date Obtained	Min Value	Mean Value	Median Value	Max or Only Value
5	TSS	mg/L	Upon discharge	0	-	-	-	-	-	-
	Conductivity	ms/cm		0	-	-	-	-	-	-
	Oil & Grease	mg/L		0	-	-	-	-	-	-
	pH	pH		0	-	-	-	-	-	-
6	TSS	mg/L	Upon discharge	0	-	-	-	-	-	-
	Conductivity	ms/cm		0	-	-	-	-	-	-
	Oil & Grease	mg/L		0	-	-	-	-	-	-
	pH	pH		0	-	-	-	-	-	-
7	TSS	mg/L	Upon discharge	0	-	-	-	-	-	-
	Conductivity	ms/cm		0	-	-	-	-	-	-
	Oil & Grease	mg/L		0	-	-	-	-	-	-
	pH	pH		0	-	-	-	-	-	-
8	TSS	mg/L	Upon discharge	0	-	-	-	-	-	-
	Conductivity	ms/cm		0	-	-	-	-	-	-
	Oil & Grease	mg/L		0	-	-	-	-	-	-
	pH	pH		0	-	-	-	-	-	-



Table 2 - Pollutant Limits Apply

EPL ID	Pollutant	Units of Measure	Monitoring Frequency	No. of Samples for the Month	Date Sampled	Date Obtained	Min Value	Max or Only Value	100%ile Limit	Exceedance (Yes/No)	Comments
1	TSS	mg/L	Upon discharge	0	-	-	-	-		-	-
	Oil & Grease	mg/L		0	-	-	-	-		-	-
	pH	pH		0	-	-	-	-		-	-
2	TSS	mg/L	Upon discharge	0	-	-	-	-		-	-
	Oil & Grease	mg/L		0	-	-	-	-		-	-
	pH	pH		0	-	-	-	-		-	-
3	TSS	mg/L	Upon discharge	0	-	-	-	-		-	-
	Oil & Grease	mg/L		0	-	-	-	-		-	-
	pH	pH		0	-	-	-	-		-	-
24	TSS	mg/L	Upon discharge	0	-	-	-	-		-	-
	Oil & Grease	mg/L		0	-	-	-	-		-	-
	pH	pH		0	-	-	-	-		-	-
25	TSS	mg/L	Upon discharge	0	-	-	-	-		-	-
	Oil & Grease	mg/L		0	-	-	-	-		-	-
	pH	pH		0	-	-	-	-		-	-
26	TSS	mg/L	Upon discharge	0	-	-	-	-		-	-
	Oil & Grease	mg/L		0	-	-	-	-		-	-
	pH	pH		0	-	-	-	-		-	-
27	TSS	mg/L	Upon discharge	0	-	-	-	-		-	-
	Oil & Grease	mg/L		0	-	-	-	-		-	-
	pH	pH		0	-	-	-	-		-	-



Table 3 – Monitoring (Quarterly & 6 Monthly – No Limits apply)

EPL ID	Pollutant	Units of Measure	Monitoring Frequency	No. of Samples for the Period	Date Sampled	Date Obtained	Min Value	Mean Value	Median Value	Max or Only Value
9	Conductivity	ms/cm	6 monthly	0	-	-	-	-		
	Lead	mg/L		0	-	-	-	-		
	pH	pH		0	-	-	-	-		
	Standing Water Level	metres		0	-	-	-	-		
10	Conductivity	ms/cm	6 monthly	0	-	-	-	-		
	Lead	mg/L		0	-	-	-	-		
	pH	pH		0	-	-	-	-		
	Standing Water Level	metres		0	-	-	-	-		
11	Conductivity	ms/cm	6 monthly	0	-	-	-	-		
	Lead	mg/L		0	-	-	-	-		
	pH	pH		0	-	-	-	-		
	Standing Water Level	metres		0	-	-	-	-		
12	Conductivity	ms/cm	6 monthly	0	-	-	-	-		
	Lead	mg/L		0	-	-	-	-		
	pH	pH		0	-	-	-	-		
	Standing Water Level	metres		0	-	-	-	-		
13	Conductivity	ms/cm	Quarterly	0	-	-	-	-		
	Oil & Grease	mg/L		0	-	-	-	-		
	pH	pH		0	-	-	-	-		
	TSS	mg/L		0	-	-	-	-		



Table 4 – Monitoring (Noise – Limits Apply)

EPL ID	Date	Start Time	Measurement period	Measured Levels – dB(A) L _{eq} 15min Day	Measured Levels – dB(A) L _{eq} 15min Evening	Measured Levels – dB(A) L _{eq} 15min Night	Measured Levels – dB(A) L _{A1} (1 min) Night	Limit	Wind Speed (m/s)	Stability Class	Compliant (Yes/No)	Date Obtained
TN2	-	-	-	-				-	-	-	-	No Sampling
	-	-	-		-			-	-	-	-	
	-	-	-			-		-	-	-	-	
	-	-	-				-	-	-	-	-	



Table 5 – Monitoring (Noise – Limits Apply)

EPL ID	Date	Start Time	Measurement period	Measured Levels – dB(A) L _{eq} 15min Day	Measured Levels – dB(A) L _{eq} 15min Evening	Measured Levels – dB(A) L _{eq} 15min Night	Measured Levels – dB(A) L _{A1} (1 min) Night	Limit	Wind Speed (m/s)	Stability Class	Compliant (Yes/No)	Date Obtained
TN3	-	-	-	-				-	-	-	-	No Sampling
	-	-	-		-			-	-	-	-	
	-	-	-			-		-	-	-	-	
	-	-	-				-	-	-	-	-	



Table 6 – Monitoring (Noise – Limits Apply)

EPL ID	Date	Start Time	Measurement period	Measured Levels – dB(A) L _{eq} 15min Day	Measured Levels – dB(A) L _{eq} 15min Evening	Measured Levels – dB(A) L _{eq} 15min Night	Measured Levels – dB(A) L _{A1} (1 min) Night	Limit	Wind Speed (m/s)	Stability Class	Compliant (Yes/No)	Date Obtained
TN4	-	-	-	-	-	-	-	-	-	-	-	No Sampling
	-	-	-	-	-	-	-	-	-	-	-	
	-	-	-	-	-	-	-	-	-	-	-	
	-	-	-	-	-	-	-	-	-	-	-	



Table 7 – Monitoring (Blasts – Limits Apply)

Location	Parameter	Units of Measure	Frequency	No. of Blasts for the Month	Average Value	Max Value	100%ile Limit	(Potential) Non-compliance /breach	Date Obtained
Tarrawonga	Blast Noise	dB (Lin Peak)	Every Blast	5	99.4	106.5	120	Nil	28/12/2017
	Blast Vibration	mm/s	Every Blast	5	0.65	1.14	10	Nil	28/12/2017

Figure 1 – EPL 12365 Onsite Monitoring Locations

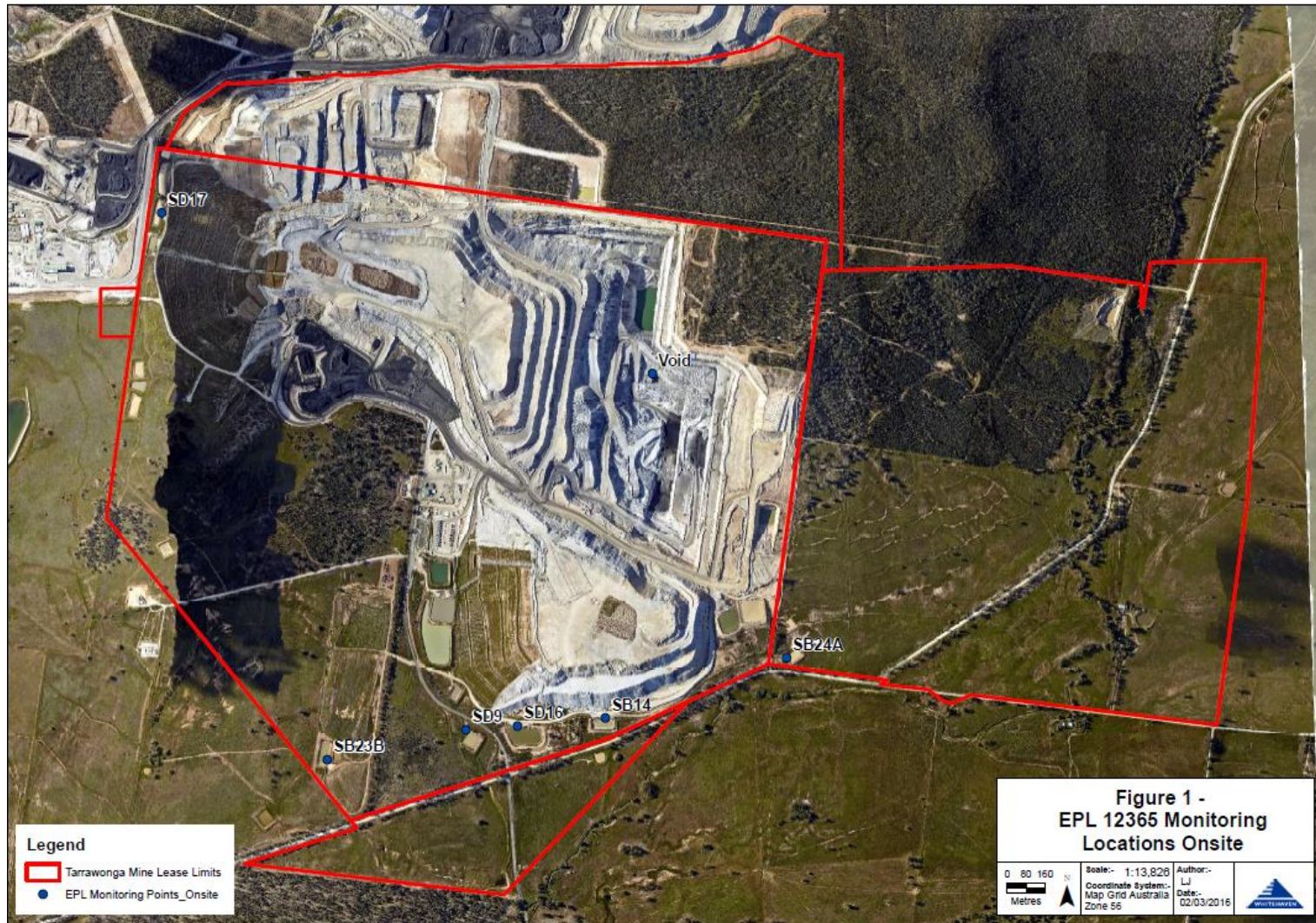


Figure 2 – EPL 12365 Offsite Monitoring Locations

